

Indeks Harga Saham Gabungan (IHSG)

Range : 5,960 — 6,125



IHSG pada perdagangan kemrain ditutup melemah berada di level 5,993.

Indeks tampak sedang mencoba bergerak melewati level psikologis di 6,000 yang jika mampu melewatinya berpotensi berlanjut menuju support level 5,960 hingga 5,900.

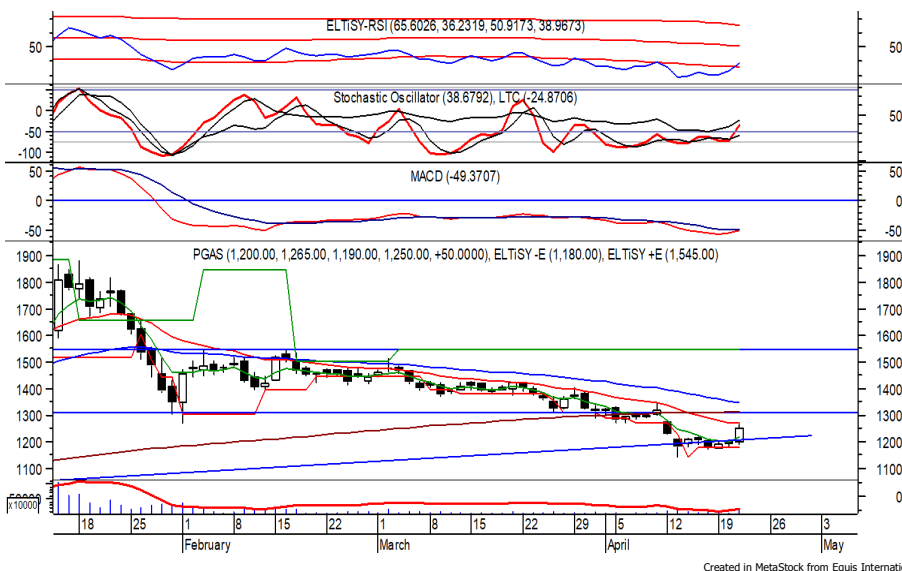
Stochastic yang mengalami bearish cross-over berpotensi membawa indeks melemah. Namun golden cross pada MACD berpeluang menghambat laju pelemahan indeks. Hari ini diperkirakan indeks bergerak fluktuatif, cenderung menguat terba-

| Level | Support | Resistance |
|-------|---------|------------|
| I | 5,960 | 6,080 |
| II | 5,900 | 6,125 |
| III | 5,880 | 6,170 |

| Top Active | | | Top Foreign Buy | | | Top Foreign Sell | | | Top Leading | | |
|------------|-------|--------|-----------------|--------|------------|------------------|--------|--------------|-------------|---------|---------|
| Code | Close | Freq | Code | Close | Value | Code | Close | Value | Code | IDX Pts | Chg (%) |
| MKNT | 50 | 24,940 | UNTR | 22,475 | 37,152,695 | TAPG | 715 | -203,739,568 | BANK | 1.7 | 4.2 |
| FILM | 550 | 24,681 | PGAS | 1,250 | 25,401,006 | ASII | 5,225 | -81,132,330 | UNTR | 1.5 | 2.2 |
| PGAS | 1,250 | 17,584 | MNCN | 995 | 25,133,147 | BBCA | 30,825 | -80,178,410 | SMMA | 1.5 | 2.1 |
| SBAT | 54 | 15,429 | ANTM | 2,370 | 25,046,567 | BMRI | 6,125 | -76,351,310 | BYAN | 1.1 | 3.3 |
| NPGF | 160 | 14,737 | INDF | 6,775 | 20,412,575 | BBRI | 4,230 | -46,459,854 | POLL | 1.1 | 6.2 |
| BBRI | 4,230 | 14,495 | TBIG | 2,580 | 14,025,609 | TLKM | 3,280 | -43,978,271 | Top Lagging | | |
| ANTM | 2,370 | 14,143 | AALI | 9,800 | 7,762,390 | BBNI | 5,775 | -27,155,485 | Code | IDX Pts | Chg (%) |
| ZYRX | 715 | 14,049 | BTPS | 3,210 | 7,648,519 | MDKA | 2,280 | -22,708,774 | BBRI | -8.3 | -1.9 |
| PNBS | 125 | 12,556 | HMSP | 1,325 | 4,652,742 | LINK | 4,140 | -16,833,113 | BBCA | -7.3 | -1.1 |
| RAJA | 260 | 12,319 | BDMN | 2,600 | 4,506,632 | UNVR | 6,100 | -16,679,785 | UNVR | -4.1 | -2.0 |
| | | | | | | | | | TLKM | -3.4 | -1.2 |
| | | | | | | | | | BMRI | -3.0 | -1.2 |

PT. Perusahaan Gas Negara Tbk.

(PGAS) β : 2.45 Price : 1,250 TP: 1,290-1,310



PGAS mampu ditutup menguat pada perdagangan sebelumnya berada di IDR 1,250.

Harga berpeluang melanjutkan penguatannya setelah bergerak melewati resistance level IDR 1,220, di mana berpeluang menuju level berikutnya di IDR 1,290 hingga IDR 1,310.

Bullish crossover yang terjadi pada stochastic memberikan peluang adanya penguatan.

- Rekomendasi** : **Speculative Buy**
- Entry Level** : **1,220-1,250**
- Take Profit** : **1,290-1,310**
- Stop Loss** : **1,195**

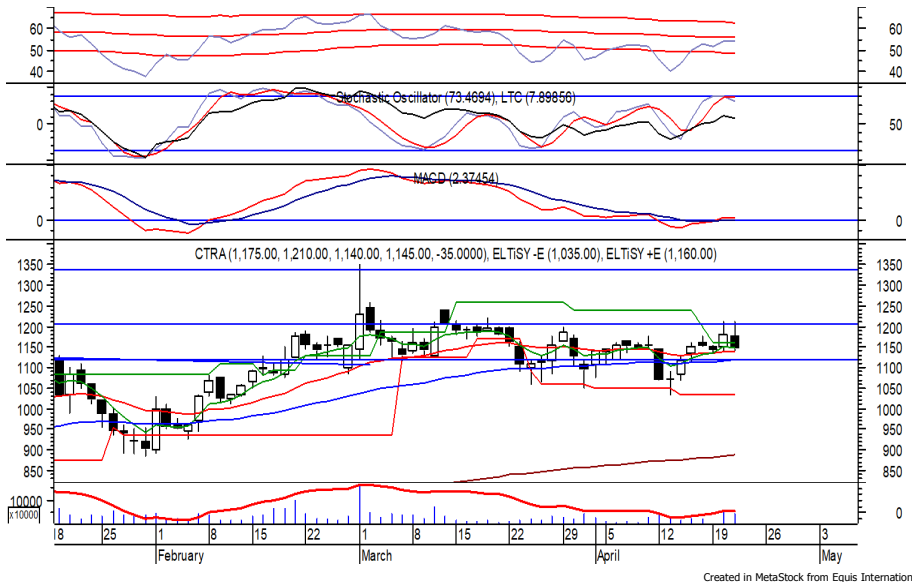
PT. Ciputra Development Tbk.

(CTRA) β :

2.07

Price : 1,145

TP: 1,185-1,205



CTRA pada perdagangan kemarin ditutup melemah berada di level IDR 1,145.

Harga tampak sedang melanjutkan konsolidasi dan mencoba bertahan di atas EMA 50 dan/atau support level IDR 1,120, di mana berpeluang menguat menuju resistance level IDR 1,185 hingga IDR 1,205.

MACD yang mengalami golden cross memberikan peluang penguatan.

Rekomendasi : Buy on Weakness
Entry Level : 1,120-1,140
Take Profit : 1,185-1,205
Stop Loss : 1,090

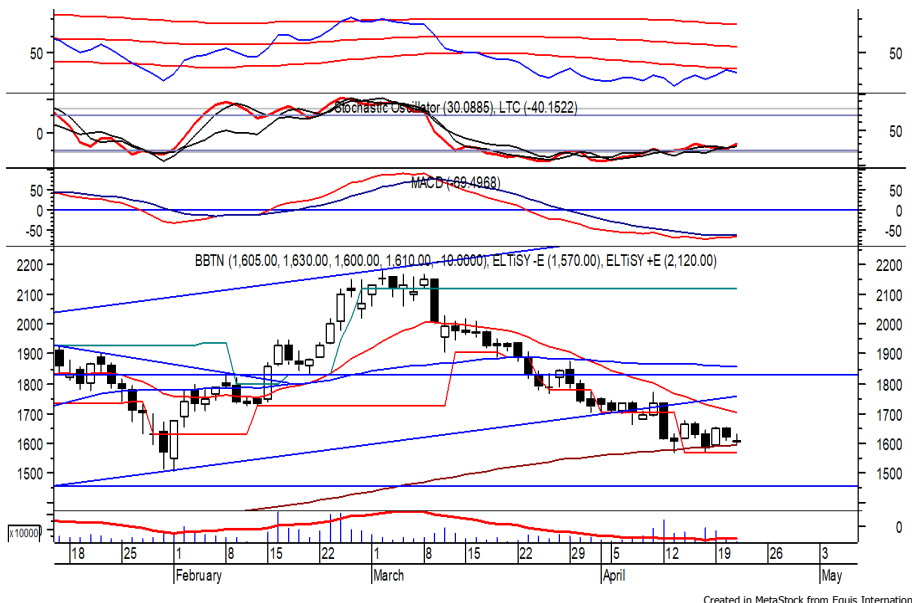
PT. Bank Tabungan Negara (Persero) Tbk.

(BBTN) β :

2.40

Price : 1,610

TP: 1,675-1,700



BBTN kembali ditutup melemah pada perdagangan kemarin berada di level IDR 1,610.

Harga tampak sedang mencoba bertahan di atas MA 200, di mana berpeluang menguat dan bergerak menuju resistance level IDR 1,675 hingga IDR 1,700.

Indikasi golden cross pada MACD memberikan peluang terjadinya penguatan. Kecuali harga kembali melemah hingga di bawah IDR 1,550.

Rekomendasi : Buy on Weakness
Entry Level : 1,570-1,600
Take Profit : 1,675-1,700
Stop Loss : 1,540

PT. Media Nusantara Citra Tbk.

(MNCN) β :

1.76

Price :

995

TP:

**1,045-
1,055**



Sempat dibuka melemah di awal perdagangan, MNCN akhirnya mampu ditutup menguat berada di level IDR 995.

Harga tampak sedang bergerak melewati resistance level IDR 985, di mana berpeluang berlanjut menuju level berikutnya di IDR 1,045 hingga IDR 1,055.

Golden cross pada MACD memberikan peluang adanya penguatan.

Rekomendasi : Trading Buy
Entry Level : 975-995
Take Profit : 1,045-1,055
Stop Loss : 945

PT. Bank Mandiri (Persero) Tbk.

(BMRI) β :

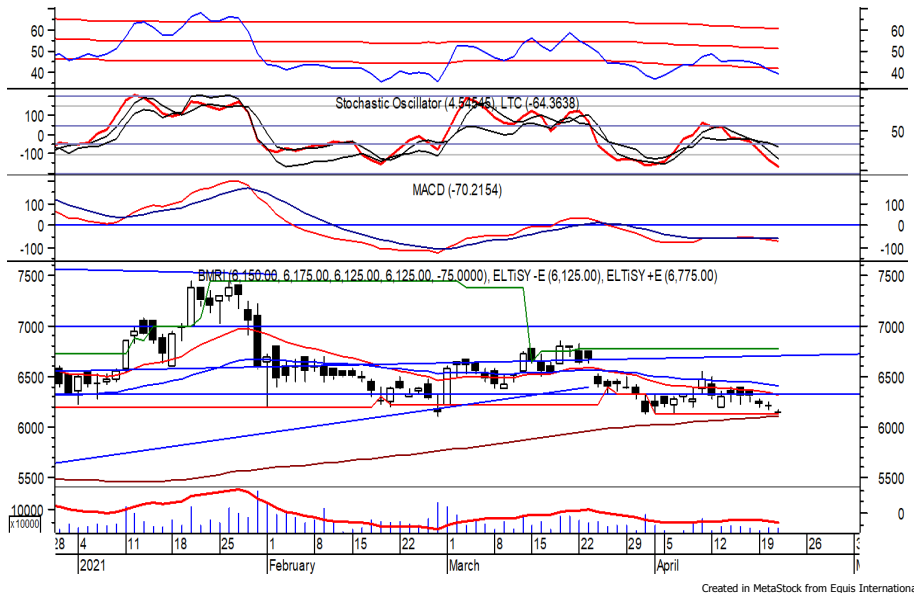
1.35

Price :

6,125

TP:

**6,325-
6,425**



BMRI ditutup melemah pada perdagangan kemarin melanjutkan pelemahan yang terjadi sebelumnya.

Harga tampak sedang mencoba bertahan di atas MA 200, di mana berpeluang rebound dan bergerak menuju resistance level IDR 6,325 hingga IDR 6,425.

Stochastic yang menunjukkan kejenuhan harga terhadap aksi jual berpeluang membawahkan harga menguat.

Rekomendasi : Speculative Buy
Entry Level : 6,075-6,125
Take Profit : 6,325-6,425
Stop Loss : 5,975

Keterangan:

- Speculative Buy : Harga menyentuh support, harga dapat saja meneruskan pelemahan, tetapi berpotensi rebound jika harga gagal break support.
 - Buy : Harga bergerak rebound meninggalkan support level.
 - Trading Buy : Harga masih berpotensi naik, tetapi sudah mendekati resistance level.
 - Sell : Harga telah mencapai resistance level.
- Rekomendasi berdasarkan candlestick berlaku sampai 5 atau 8 hari ke depan (maksimal 10 hari), selebihnya dapat diartikan bahwa formasi candlestick gagal.

Research Division

| | | | | |
|-------------------|--------------------|----------------------------------|------------------|-------|
| Danny Eugene | Head of Research | danny.eugene@megasekuritas.id | +62 21 7917 5599 | 62431 |
| Fadlillah Qudsi | Technical Analyst | fadlillah.qudsi@megasekuritas.id | +62 21 7917 5599 | 62035 |
| Josua Lois Sinaga | Research Associate | josua.lois@megasekuritas.id | +62 21 7917 5599 | 62425 |

Retail Equity Sales Division

| | | | | |
|----------------------|----------------------------------|-----------------------------------|------------------|-------|
| Carsum Kusmady | Head of Sales, Trading & Dealing | carsum.kusmady@megasekuritas.id | +62 21 7917 5599 | 62038 |
| Andri Sumarno | Retail Equity Sales | andri@megasekuritas.id | +62 21 7917 5599 | 62045 |
| Andrie Zainal Zen | Retail Equity Sales | andrie.zainal@megasekuritas.id | +62 21 7917 5599 | 62048 |
| Brema Setyawan | Retail Equity Sales | brema.setyawan@megasekuritas.id | +62 21 7917 5599 | 62126 |
| Dewi Suryani | Retail Equity Sales | dewi.suryani@megasekuritas.id | +62 21 7917 5599 | 62441 |
| Ety Sulistyowati | Retail Equity Sales | ety.sulistyowati@megasekuritas.id | +62 21 7917 5599 | 62408 |
| Fadel Muhammad Iqbal | Retail Equity Sales | fadel@megasekuritas.id | +62 21 7917 5599 | 62164 |
| Syaifathir Muhamad | Retail Equity Sales | fathir@megasekuritas.id | +62 21 7917 5599 | 62179 |

Corporate Equity Division
Fixed Income Sales & Trading

Tel. +62 7917 5559-62 Fax. +62 21 7917 5965

Investment Banking

Tel. +62 21 7917 5599 Fax. +62 21 7919 3900

PT. Mega Capital Sekuritas
 Menara Bank Mega Lt. 2
 Jl. Kapt P. Tendean, Kav 12-14 A
 Jakarta Selatan 12790

DISCLAIMER

This Document is for information only and for the use of the recipient. It is not to be reproduced or copied or made available to others. Under no circumstances is it to be considered as an offer to sell or solicitation to buy any security. Any recommendation contained in this report may not be suitable for all investors and strictly a personal view and should not be used as a sole judgment for investment. Moreover, although the information contained herein has been obtained from sources believed to be reliable, its accuracy, completeness and reliability cannot be guaranteed. All rights reserved by PT Mega Capital Sekuritas.