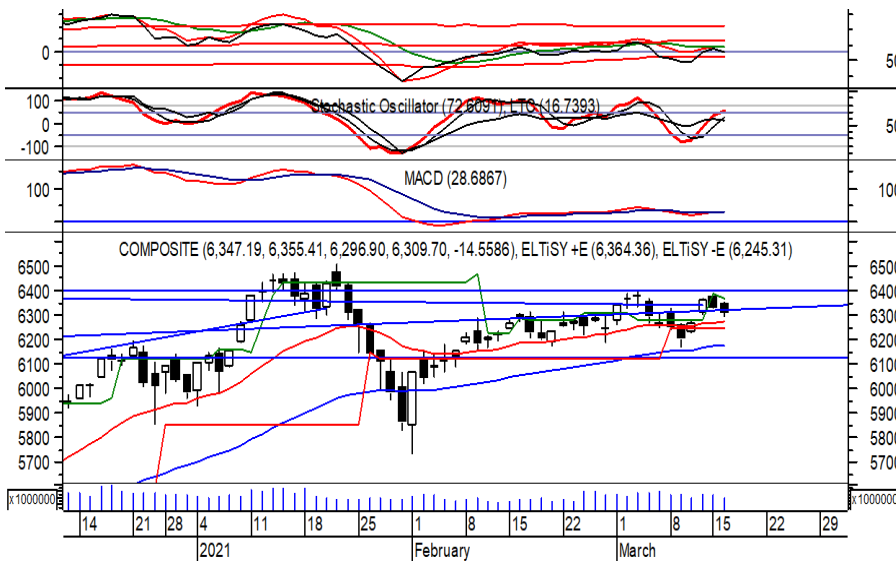


Indeks Harga Saham Gabungan (IHSG)

Range : 6,245 — 6,365



Sempat dibuka menguat di awal perdagangan kemarin, IHSG akhirnya ditutup melemah berada di level 6,309.

Indeks berpotensi kembali melanjutkan pelemahannya setelah belum mampu melewati resistance level 6,395, di mana berpotensi menuju support level 6,245 hingga 6,200.

Namun stochastic yang cenderung menguat berpeluang menghambat laju pelemahan indeks. Hari ini diperkirakan indeks bergerak fluktuatif, cenderung melemah terbatas.

| Level | Support | Resistance |
|-------|---------|------------|
| I | 6,245 | 6,365 |
| II | 6,200 | 6,395 |
| III | 6,175 | 6,435 |

| Top Active | | | Top Foreign Buy | | | Top Foreign Sell | | | Top Leading | | |
|------------|--------|--------|-----------------|--------|-------------|------------------|--------|--------------|-------------|---------|---------|
| Code | Close | Freq | Code | Close | Value | Code | Close | Value | Code | IDX Pts | Chg (%) |
| TINS | 1,770 | 41,958 | BBRI | 4,720 | 156,851,364 | BBCA | 33,125 | -215,746,510 | BBRI | 15.7 | 3.3 |
| ANTM | 2,270 | 41,227 | ISAT | 6,175 | 39,563,137 | INCO | 4,560 | -85,191,771 | BRIS | 2.8 | 3.1 |
| AGRO | 1,335 | 39,160 | TCPI | 9,200 | 38,050,150 | ASII | 5,550 | -72,964,275 | ISAT | 2.6 | 9.8 |
| VIVA | 70 | 26,739 | GGRM | 36,675 | 31,506,875 | MDKA | 2,420 | -49,734,559 | TPIA | 1.9 | 1.2 |
| BBRI | 4,720 | 26,404 | LSIP | 1,480 | 29,012,080 | EMTK | 2,260 | -30,246,897 | SCMA | 1.6 | 7.4 |
| DOID | 378 | 24,912 | MIKA | 2,950 | 23,061,988 | BFIN | 770 | -23,218,798 | Top Lagging | | |
| GJTL | 955 | 24,008 | JPFA | 1,895 | 14,848,775 | BBNI | 6,225 | -23,162,770 | Code | IDX Pts | Chg (%) |
| MDIA | 95 | 21,472 | BSDE | 1,280 | 14,388,529 | INKP | 12,625 | -22,058,712 | ARTO | -8.8 | -6.9 |
| BBCA | 33,125 | 20,759 | KLBF | 1,585 | 13,450,270 | TLKM | 3,360 | -21,115,969 | BBCA | -4.2 | -0.6 |
| EXCL | 2,220 | 19,295 | DMMX | 450 | 9,906,635 | ARTO | 10,100 | -19,671,330 | BMRI | -3.9 | -1.5 |
| | | | | | | | | | MAYA | -3.8 | -6.8 |
| | | | | | | | | | INKP | -2.7 | -4.4 |

PT. Bank Rakyat Indonesia (Persero), Tbk. (BBRI) β : 1.46 Price : 4,720 TP: 4,840-4,920



BBRI mampu ditutup menguat pada perdagangan sebelumnya berada di level IDR 4,720.

Harga tampak sedang mencoba bertahan di atas EMA 50, di mana berpeluang kembali menguat menuju resistance level IDR 4,840 hingga IDR 4,920. Stochastic yang mengalami bullish crossover memberikan peluang penguatan. Kecuali harga berbalik melemah hingga di bawah IDR 4,600.

Rekomendasi : Buy on Weakness
Entry Level : 4,650-4,700
Take Profit : 4,840-4,920
Stop Loss : 4,580/4,530

PT. Ace Hardware Indonesia, Tbk.

(ACES) β :

0.69

Price : 1,575

BF: 1,550-1,535



ACES pada perdagangan kemarin ditutup melemah berada di level IDR 1,575.

Harga tampak belum mampu melewati MA 200, di mana berpotensi melanjutkan pelemahannya menuju support level IDR 1,550 hingga IDR 1,535.

Stochastic yang mengalami bearish crossover berpotensi membawa harga melemah. Kecuali harga mampu berbalik menguat hingga di atas IDR 1,650.

- Rekomendasi** : Sell on Strength
- Exit Level** : 1,620-1,600
- Bottom Fishing** : 1,550-1,535
- Buy Back** : 1,665

PT. Surya Citra Media, Tbk.

(SCMA) β :

1.72

Price : 1,880

TP: 1,980-2,000



SCMA pada perdagangan kemarin mampu ditutup menguat berada di level IDR 1,880.

Harga tampak sedang bergerak melewati resistance level 1,820, di mana berpeluang berlanjut menguat menuju resistance level IDR 1,980 hingga IDR 2,000.

MACD yang mengindikasikan terjadinya golden cross memberikan peluang penguatan. Kecuali harga berbalik melemah hingga di bawah IDR 1,760.

- Rekomendasi** : Buy on Weakness
- Entry Level** : 1,820-1,850
- Take Profit** : 1,980-2,000
- Stop Loss** : 1,750

PT. Tower Bersama Infrastruktur, Tbk. (TBIG) β : 0.92 Price : 2,090 TP: 2,170-2,250



TBIG ditutup melemah pada perdagangan kemarin berada di level IDR 2,090.

Harga tampak sedang melanjutkan konsolidasi dan mencoba bertahan di atas EMA 50, di mana berpeluang menguat menuju resistance level IDR 2,170 hingga IDR 2,250. Stochastic berada di wilayah netral dengan kecenderungan menguat. Kecuali harga kembali melemah hingga di bawah IDR 1,960.

- Rekomendasi** : Buy on Weakness
- Entry Level** : 2,010-2,060
- Take Profit** : 2,170-2,250
- Stop Loss** : 1,950

PT. AKR Corporindo, Tbk. (AKRA) β : 1.77 Price : 3,490 BF: 3,430-3,360



AKRA ditutup melemah pada perdagangan kemarin berada di level IDR 3,490.

Harga tampak belum mampu bertahan di atas 3,550, di mana berpotensi melanjutkan pelemahannya menuju support level IDR 3,430 hingga IDR 3,360.

Stochastic berada di wilayah netral dengan kecenderungan melemah. Kecuali harga mampu menguat hingga di atas IDR 3,610.

- Rekomendasi** : Sell on Strength
- Exit Level** : 3,550-3,500
- Bottom Fishing** : 3,430-3,360
- Buy Back** : 3,620

Keterangan:

- Speculative Buy** : Harga menyentuh support, harga dapat saja meneruskan pelemahan, tetapi berpotensi rebound jika harga gagal break support.
 - Buy** : Harga bergerak rebound meninggalkan support level.
 - Trading Buy** : Harga masih berpotensi naik, tetapi sudah mendekati resistance level.
 - Sell** : Harga telah mencapai resistance level.
- Rekomendasi berdasarkan candlestick berlaku sampai 5 atau 8 hari ke depan (maksimal 10 hari), selebihnya dapat diartikan bahwa formasi candlestick gagal.

Research Division

| | | | | |
|-------------------|--------------------|----------------------------------|------------------|-------|
| Danny Eugene | Head of Research | danny.eugene@megasekuritas.id | +62 21 7917 5599 | 62431 |
| Fadlillah Qudsi | Technical Analyst | fadlillah.qudsi@megasekuritas.id | +62 21 7917 5599 | 62035 |
| Josua Lois Sinaga | Research Associate | josua.lois@megasekuritas.id | +62 21 7917 5599 | 62425 |

Retail Equity Sales Division

| | | | | |
|----------------------|----------------------------------|-----------------------------------|------------------|-------|
| Carsum Kusmady | Head of Sales, Trading & Dealing | carsum.kusmady@megasekuritas.id | +62 21 7917 5599 | 62038 |
| Andri Sumarno | Retail Equity Sales | andri@megasekuritas.id | +62 21 7917 5599 | 62045 |
| Andrie Zainal Zen | Retail Equity Sales | andrie.zainal@megasekuritas.id | +62 21 7917 5599 | 62048 |
| Brema Setyawan | Retail Equity Sales | brema.setyawan@megasekuritas.id | +62 21 7917 5599 | 62126 |
| Dewi Suryani | Retail Equity Sales | dewi.suryani@megasekuritas.id | +62 21 7917 5599 | 62441 |
| Ety Sulistyowati | Retail Equity Sales | ety.sulistyowati@megasekuritas.id | +62 21 7917 5599 | 62408 |
| Fadel Muhammad Iqbal | Retail Equity Sales | fadel@megasekuritas.id | +62 21 7917 5599 | 62164 |
| Syaifathir Muhamad | Retail Equity Sales | fathir@megasekuritas.id | +62 21 7917 5599 | 62179 |

Corporate Equity Division
Fixed Income Sales & Trading

Tel. +62 7917 5559-62 Fax. +62 21 7917 5965

Investment Banking

Tel. +62 21 7917 5599 Fax. +62 21 7919 3900

PT. Mega Capital Sekuritas
 Menara Bank Mega Lt. 2
 Jl. Kapt P. Tendean, Kav 12-14 A
 Jakarta Selatan 12790

DISCLAIMER

This Document is for information only and for the use of the recipient. It is not to be reproduced or copied or made available to others. Under no circumstances is it to be considered as an offer to sell or solicitation to buy any security. Any recommendation contained in this report may not be suitable for all investors and strictly a personal view and should not be used as a sole judgment for investment. Moreover, although the information contained herein has been obtained from sources believed to be reliable, its accuracy, completeness and reliability cannot be guaranteed. All rights reserved by PT Mega Capital Sekuritas.