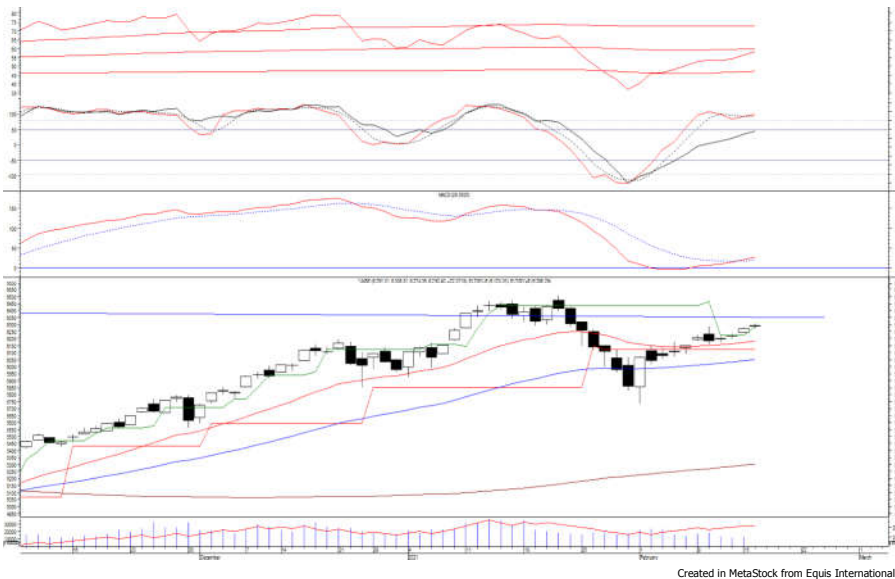


Indeks Harga Saham Gabungan

(IHSG)

Range : 6,245 — 6,375



IHSG pada perdagangan kemarin kembali ditutup menguat berada di level 6,292.

Indeks berpeluang melanjutkan penguatannya dan bergerak menuju resistance level di 6,375.

MACD berada pada kecenderungan menguat, namun overbought yang terjadi pada stochastic berpotensi menghambat laju penguatan indeks yang jika berbalik melemah berpotensi menguji 6,245. Hari ini diperkirakan indeks bergerak fluktuatif dengan kecenderungan menguat terbatas.

| Level | Support | Resistance |
|-------|---------|------------|
| I | 6,245 | 6,375 |
| II | 6,225 | 6,435 |
| III | 6,170 | 6,475 |

| Top Active | | | Top Foreign Buy | | | Top Foreign Sell | | | Top Leading | | |
|------------|-------|--------|-----------------|--------|------------|------------------|--------|-------------|-------------|---------|---------|
| Code | Close | Freq | Code | Close | Value | Code | Close | Value | Code | IDX Pts | Chg (%) |
| TINS | 2,330 | 68,842 | BBCA | 34,700 | 82,051,592 | ICBP | 8,825 | -89,677,203 | BBCA | 14.6 | 2.1 |
| ANTM | 2,870 | 56,265 | BONI | 6,350 | 62,176,542 | BMRI | 6,475 | -88,848,730 | KPIG | 3.2 | 34.3 |
| AGRO | 1,140 | 45,345 | ANTM | 2,870 | 55,193,725 | ASII | 5,925 | -62,195,405 | CPIN | 2.8 | 3.3 |
| KPIG | 184 | 29,552 | BBTN | 1,930 | 34,790,078 | BBRI | 4,670 | -56,192,757 | BANK | 2.4 | 23.8 |
| IRRA | 2,500 | 27,433 | TINS | 2,330 | 20,795,360 | KPIG | 184 | -33,912,909 | ARTO | 2.3 | 3.3 |
| EXCL | 2,210 | 27,061 | MDKA | 2,550 | 19,725,417 | GGRM | 38,475 | -33,140,870 | Top Lagging | | |
| WSKT | 1,605 | 26,653 | UNVR | 7,025 | 18,810,475 | INCO | 6,225 | -24,087,387 | Code | IDX Pts | Chg (%) |
| BBKP | 575 | 25,129 | WIIM | 915 | 12,974,324 | EXCL | 2,210 | -20,283,347 | BBRI | -4.2 | -0.8 |
| BBRI | 4,670 | 23,130 | EMTK | 2,090 | 11,722,117 | INKP | 14,725 | -19,135,495 | BRPT | -2.0 | -2.1 |
| KAEF | 3,990 | 22,757 | CPIN | 6,325 | 11,644,970 | PTBA | 2,600 | -15,608,778 | ICBP | -1.5 | -1.7 |
| | | | | | | | | | BMRI | -1.0 | -0.4 |
| | | | | | | | | | CASA | -0.9 | -4.1 |

PT. Kimia Farma, Tbk.

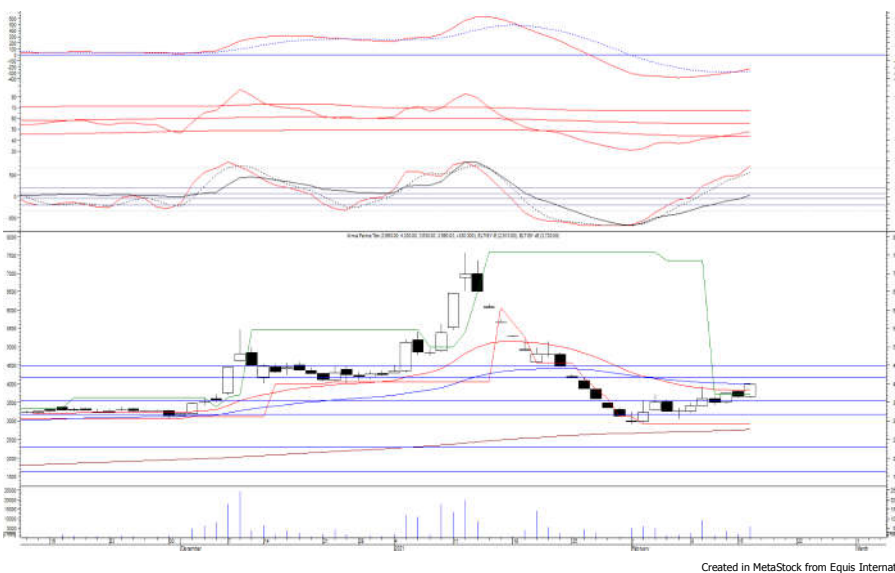
(KAEF) β :

(0.13) Price :

3,990

TP:

4,180-4,250



KAEF pada perdagangan sebelumnya ditutup menguat berada di level IDR 3,990.

Harga tampak sedang mencoba bergerak melewati EMA 50, di mana berpeluang berlanjut menguat menuju resistance level IDR 4,180 hingga IDR 4,250.

MACD yang mengalami golden cross memberikan peluang untuk menguat, kecuali melemah di bawah IDR 3,820.

- Rekomendasi** : Speculative Buy
- Entry Level** : 3,900-3,990
- Take Profit** : 4,180-4,250
- Stop Loss** : 3,800

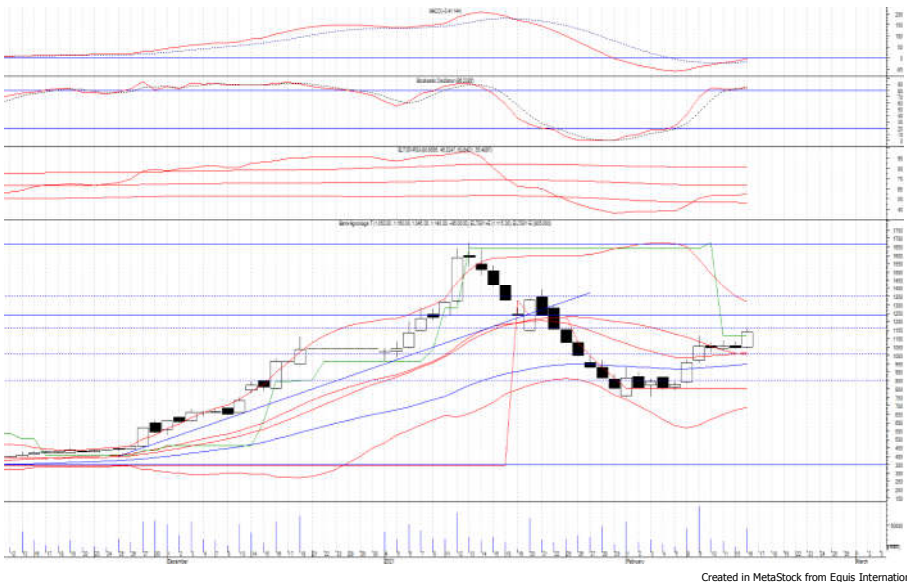
PT. BRI Agri Niaga, Tbk.

(AGRO) β :

3.36

Price : 1,140

TP: 1,235-1,280



AGRO ditutup menguat pada perdagangan kemarin berada di level IDR 1,140.

Harga tampak sedang mencoba bergerak melewati IDR 1,115, di mana berpeluang melanjutkan penguatannya menuju resistance level IDR 1,235 hingga IDR 1,280.

Golden cross yang terjadi pada MACD memberikan peluang adanya penguatan.

Rekomendasi : Speculative Buy
Entry Level : 1,110-1,140
Take Profit : 1,235-1,280
Stop Loss : 1,070

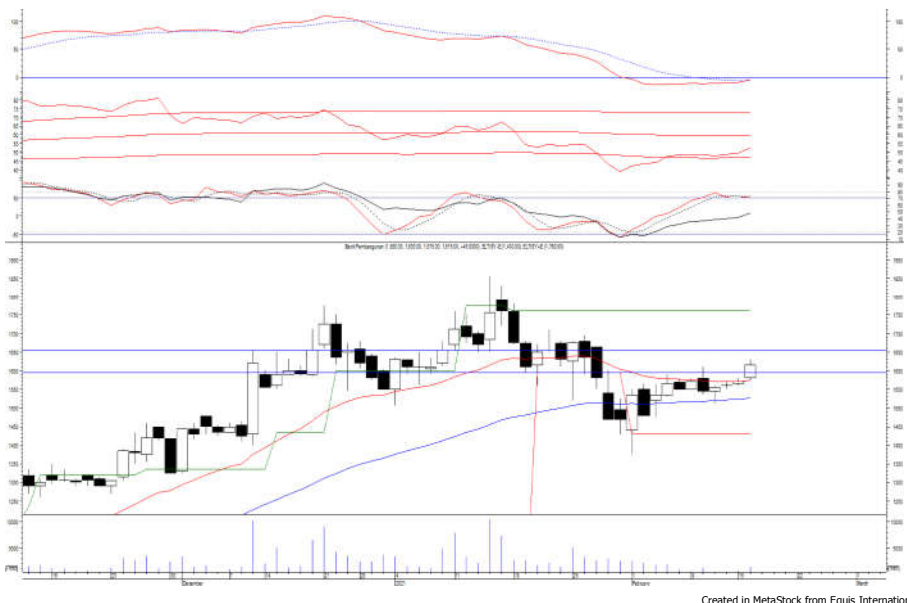
PT. BPD Jabar & Banten, Tbk.

(BJBR) β :

1.90

Price : 1,615

TP: 1,655-1,680



BJBR pada perdagangan kemarin ditutup menguat berada di level IDR 1,615.

Harga tampak sedang bergerak melewati EMA 20, di mana berpeluang melanjutkan penguatannya menuju resistance level IDR 1,655 hingga IDR 1,680.

MACD yang mengalami golden cross memberikan peluang adanya penguatan. Kecuali harga berbalik melemah hingga di bawah IDR 1,575.

Rekomendasi : Speculative Buy
Entry Level : 1,595-1,615
Take Profit : 1,655-1,680
Stop Loss : 1,570

PT. Indo Tambangraya Megah, Tbk.

(ITMG) β :

1.82

Price : 12,675

TP: 13,100-13,250



ITMG ditutup melemah pada perdagangan kemarin berada di level IDR 12,675.

Harga tampak sedang mengalami konsolidasi dan mencoba bertahan di atas support level IDR 12,500, di mana berpeluang menguat dan bergerak menuju resistance level IDR 13,100 hingga IDR 13,250.

MACD yang mengalami golden cross memberikan peluang penguatan.

Rekomendasi : Buy on Weakness
Entry Level : 12,500-12,600
Take Profit : 13,100-13,250
Stop Loss : 12,250

PT. Bank Rakyat Indonesia (Persero), Tbk.

(BBRI) β :

1.46

Price : 4,670

BF: 4,540-4,450



BBRI sempat dibuka menguat di awal perdagangan kemarin, namun akhirnya ditutup melemah berada di level IDR 4,670.

Harga tampak belum mampu melewati resistance level IDR 4,780, di mana berpotensi mengalami koreksi menuju support level IDR 4,540 hingga IDR 4,450.

Stochastic yang mengalami bearish crossover berpotensi membawa harga melemah. Kecuali mampu menguat hingga di atas IDR 4,780.

Rekomendasi : Sell on Strength
Exit Level : 4,750-4,700
Bottom Fishing : 4,540-4,450
Buy Back : 4,800

Keterangan:

- Speculative Buy : Harga menyentuh support, harga dapat saja meneruskan pelemahan, tetapi berpotensi rebound jika harga gagal break support.
 - Buy : Harga bergerak rebound meninggalkan support level.
 - Trading Buy : Harga masih berpotensi naik, tetapi sudah mendekati resistance level.
 - Sell : Harga telah mencapai resistance level.
- Rekomendasi berdasarkan candlestick berlaku sampai 5 atau 8 hari ke depan (maksimal 10 hari), selebihnya dapat diartikan bahwa formasi candlestick gagal.

Research Division

| | | | | |
|-------------------|--------------------|----------------------------------|------------------|-------|
| Danny Eugene | Head of Research | danny.eugene@megasekuritas.id | +62 21 7917 5599 | 62431 |
| Fadlillah Qudsi | Technical Analyst | fadlillah.qudsi@megasekuritas.id | +62 21 7917 5599 | 62035 |
| Josua Lois Sinaga | Research Associate | josua.lois@megasekuritas.id | +62 21 7917 5599 | 62425 |

Retail Equity Sales Division

| | | | | |
|----------------------|----------------------------------|-----------------------------------|------------------|-------|
| Carsum Kusmady | Head of Sales, Trading & Dealing | carsum.kusmady@megasekuritas.id | +62 21 7917 5599 | 62038 |
| Andri Sumarno | Retail Equity Sales | andri@megasekuritas.id | +62 21 7917 5599 | 62045 |
| Andrie Zainal Zen | Retail Equity Sales | andrie.zainal@megasekuritas.id | +62 21 7917 5599 | 62048 |
| Brema Setyawan | Retail Equity Sales | brema.setyawan@megasekuritas.id | +62 21 7917 5599 | 62126 |
| Dewi Suryani | Retail Equity Sales | dewi.suryani@megasekuritas.id | +62 21 7917 5599 | 62441 |
| Ety Sulistyowati | Retail Equity Sales | ety.sulistyowati@megasekuritas.id | +62 21 7917 5599 | 62408 |
| Fadel Muhammad Iqbal | Retail Equity Sales | fadel@megasekuritas.id | +62 21 7917 5599 | 62164 |
| Syaifathir Muhamad | Retail Equity Sales | fathir@megasekuritas.id | +62 21 7917 5599 | 62179 |

Corporate Equity Division
Fixed Income Sales & Trading

Tel. +62 7917 5559-62 Fax. +62 21 7917 5965

Investment Banking

Tel. +62 21 7917 5599 Fax. +62 21 7919 3900

PT. Mega Capital Sekuritas
 Menara Bank Mega Lt. 2
 Jl. Kapt P. Tendean, Kav 12-14 A
 Jakarta Selatan 12790

DISCLAIMER

This Document is for information only and for the use of the recipient. It is not to be reproduced or copied or made available to others. Under no circumstances is it to be considered as an offer to sell or solicitation to buy any security. Any recommendation contained in this report may not be suitable for all investors and strictly a personal view and should not be used as a sole judgment for investment. Moreover, although the information contained herein has been obtained from sources believed to be reliable, its accuracy, completeness and reliability cannot be guaranteed. All rights reserved by PT Mega Capital Sekuritas.