

Indeks Harga Saham Gabungan (IHSG)

Range : 5,940 — 6,160



Sempat dibuka melemah di awal perdagangan kemarin, IHSG akhirnya ditutup menguat berada di level 6,067. Indeks berpeluang melanjutkan penguatannya setelah kembali bergerak di atas EMA 50, di mana berpeluang menuju resistance level 6,160 hingga IDR 6,250 *Bullish engulfing* yang terbentuk pada candle memberikan peluang penguatan. Namun jika indeks berbalik melemah berpotensi menguji 5,940. Hari ini diperkirakan indeks bergerak fluktuatif cenderung menguat terbatas.

| Level | Support | Resistance |
|-------|---------|------------|
| I | 5,940 | 6,160 |
| II | 5,850 | 6,250 |
| III | 5,735 | 6,320 |

| Top Active | | | Top Foreign Buy | | | Top Foreign Sell | | | Top Leading | | |
|------------|-------|---------|-----------------|--------|------------|------------------|--------|--------------|-------------|---------|---------|
| Code | Close | Freq | Code | Close | Value | Code | Close | Value | Code | IDX Pts | Chg (%) |
| ANTM | 2,600 | 220,275 | TLKM | 3,230 | 64,824,621 | BMRI | 6,700 | -244,655,807 | BBRI | 23.0 | 5.3 |
| BRIS | 2,800 | 149,819 | INCO | 6,250 | 59,983,967 | BBCA | 34,100 | -227,754,578 | BRIS | 12.5 | 14.8 |
| BBRI | 4,400 | 68,026 | BRIS | 2,800 | 28,003,084 | ASII | 6,025 | -111,715,395 | TLKM | 10.2 | 3.9 |
| TINS | 2,050 | 53,306 | INTP | 14,100 | 22,766,330 | TBIG | 2,700 | -50,491,543 | TBIG | 8.9 | 20.5 |
| BBKP | 468 | 47,520 | TINS | 2,050 | 21,690,572 | MDKA | 2,800 | -42,358,897 | BRPT | 8.4 | 11.9 |
| FILM | 348 | 44,785 | ARTO | 7,000 | 20,769,090 | BBNI | 5,850 | -34,640,310 | Top Lagging | | |
| WSKT | 1,500 | 43,923 | SCMA | 2,260 | 16,380,007 | BUMI | 67 | -30,314,364 | Code | IDX Pts | Chg (%) |
| PGAS | 1,455 | 41,053 | MNCN | 1,060 | 12,593,186 | INDF | 6,250 | -28,743,443 | ASII | -2.6 | -1.2 |
| AGRO | 865 | 40,117 | WSKT | 1,500 | 10,964,461 | INKP | 13,800 | -27,537,647 | MEGA | -1.8 | -3.3 |
| BMRI | 6,700 | 31,334 | ANTM | 2,600 | 10,456,789 | TPIA | 10,625 | -17,461,055 | DNET | -0.7 | -1.8 |
| | | | | | | | | | KAEF | -0.7 | -4.5 |
| | | | | | | | | | INAF | -0.3 | -4.3 |

PT. Vale Indonesia, Tbk.

(INCO) β : 1.57 Price : 6,250 TP: 6,600-6,750



INCO ditutup menguat pada perdagangan sebelumnya berada di level IDR 6,250.

Harga berpeluang melanjutkan penguatannya setelah belum mampu melewati EMA 50, di mana berpeluang menuju resistance level IDR 6,600 hingga IDR 6,750.

Stochastic yang mengalami bullish crossover memberikan peluang untuk menguat.

Rekomendasi : Trading Buy
Entry Level : 6,100-6,250
Take Profit : 6,600-6,750
Stop Loss : 5,900

PT. Perusahaan Gas Negara, Tbk.

(PGAS) β :

2.52

Price : 1,455

TP: 1,525-1,580



PGAS ditutup menguat pada perdagangan kemarin berada di level IDR 1,455.

Harga berpotensi melanjutkan penguatannya setelah belum mampu melewati support level di IDR 1,340, di mana berpotensi menuju resistance level IDR 1,525 hingga IDR 1,580.

Stochastic yang mengalami bullish crossover memberikan peluang penguatan.

Rekomendasi : Speculative Buy
Entry Level : 1,420-1,455
Take Profit : 1,525-1,580
Stop Loss : 1,380/1,330

PT. Bumi Serpong Damai, Tbk.

(BSDE) β :

1.68

Price : 1,185

TP: 1,255-1,285



BSDE ditutup menguat pada perdagangan kemarin berada di level IDR 1,185.

Harga berpotensi mengakhiri konsolidasi selama beberapa hari terakhir setelah bergerak melewati EMA 50, di mana berpotensi menuju resistance level IDR 1,255 hingga IDR 1,285.

Stochastic yang mengalami bullish crossover memberikan peluang penguatan. Kecuali harga berbalik melemah hingga di bawah IDR 1,115.

Rekomendasi : Speculative Buy
Entry Level : 1,150-1,185
Take Profit : 1,255-1,285
Stop Loss : 1,110/1,065

PT. Bank Negara Indonesia (Persero), Tbk. (BBNI) β : 2.01 Price : 5,850 TP: 6,075-6,200



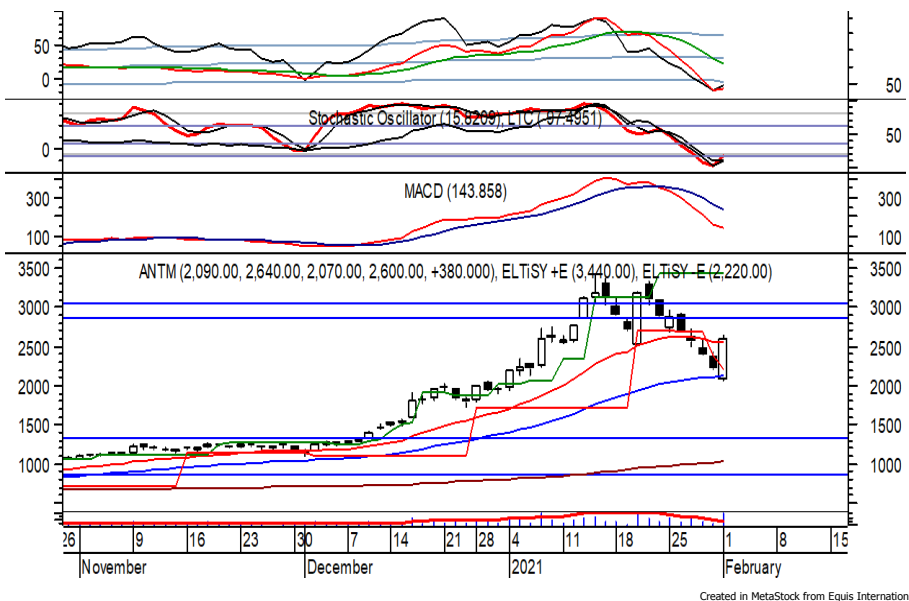
BBNI ditutup menguat pada perdagangan sebelumnya mengakhiri pelemahan yang terjadi selama lebih dari sepekan terakhir.

Harga berpeluang melanjutkan penguatannya dan bergerak menuju resistance level 6,075 hingga IDR 6,200.

Stochastic yang mengalami bullish crossover memberikan peluang untuk menguat. Kecuali harga berbalik melemah hingga di bawah IDR 5,550.

Rekomendasi : Speculative Buy
Entry Level : 5,700-5,850
Take Profit : 6,075-6,200
Stop Loss : 5,500

PT. Aneka Tambang, Tbk. (ANTM) β : 2.23 Price : 2,600 TP: 2,870-3,050



ANTM sempat dibuka melemah di awal perdagangan kemarin, namun akhirnya ditutup menguat berada di level IDR 2,600.

Harga berpeluang melanjutkan penguatannya setelah belum mampu melewati EMA 50, di mana berpeluang menuju resistance level IDR 2,870 hingga IDR 3,050.

Stochastic yang mengalami bullish crossover memberikan peluang terjadinya penguatan.

Rekomendasi : Speculative Buy
Entry Level : 2,500-2,600
Take Profit : 2,870-3,050
Stop Loss : 2,360

Keterangan:

- Speculative Buy : Harga menyentuh support, harga dapat saja meneruskan pelemahan, tetapi berpotensi rebound jika harga gagal break support.
 - Buy : Harga bergerak rebound meninggalkan support level.
 - Trading Buy : Harga masih berpotensi naik, tetapi sudah mendekati resistance level.
 - Sell : Harga telah mencapai resistance level.
- Rekomendasi berdasarkan candlestick berlaku sampai 5 atau 8 hari ke depan (maksimal 10 hari), selebihnya dapat diartikan bahwa formasi candlestick gagal.

Research Division

| | | | | |
|-------------------|--------------------|----------------------------------|------------------|-------|
| Danny Eugene | Head of Research | danny.eugene@megasekuritas.id | +62 21 7917 5599 | 62431 |
| Fadlillah Qudsi | Technical Analyst | fadlillah.qudsi@megasekuritas.id | +62 21 7917 5599 | 62035 |
| Josua Lois Sinaga | Research Associate | josua.lois@megasekuritas.id | +62 21 7917 5599 | 62425 |

Retail Equity Sales Division

| | | | | |
|----------------------|----------------------------------|-----------------------------------|------------------|-------|
| Carsum Kusmady | Head of Sales, Trading & Dealing | carsum.kusmady@megasekuritas.id | +62 21 7917 5599 | 62038 |
| Andri Sumarno | Retail Equity Sales | andri@megasekuritas.id | +62 21 7917 5599 | 62045 |
| Andrie Zainal Zen | Retail Equity Sales | andrie.zainal@megasekuritas.id | +62 21 7917 5599 | 62048 |
| Brema Setyawan | Retail Equity Sales | brema.setyawan@megasekuritas.id | +62 21 7917 5599 | 62126 |
| Dewi Suryani | Retail Equity Sales | dewi.suryani@megasekuritas.id | +62 21 7917 5599 | 62441 |
| Ety Sulistyowati | Retail Equity Sales | ety.sulistyowati@megasekuritas.id | +62 21 7917 5599 | 62408 |
| Fadel Muhammad Iqbal | Retail Equity Sales | fadel@megasekuritas.id | +62 21 7917 5599 | 62164 |
| Syaifathir Muhamad | Retail Equity Sales | fathir@megasekuritas.id | +62 21 7917 5599 | 62179 |

Corporate Equity Division
Fixed Income Sales & Trading

Tel. +62 7917 5559-62 Fax. +62 21 7917 5965

Investment Banking

Tel. +62 21 7917 5599 Fax. +62 21 7919 3900

PT. Mega Capital Sekuritas

Menara Bank Mega Lt. 2

Jl. Kapt P. Tendean, Kav 12-14 A

Jakarta Selatan 12790

DISCLAIMER

This Document is for information only and for the use of the recipient. It is not to be reproduced or copied or made available to others. Under no circumstances is it to be considered as an offer to sell or solicitation to buy any security. Any recommendation contained in this report may not be suitable for all investors and strictly a personal view and should not be used as a sole judgment for investment. Moreover, although the information contained herein has been obtained from sources believed to be reliable, its accuracy, completeness and reliability cannot be guaranteed. All rights reserved by PT Mega Capital Sekuritas.