

## Indeks Harga Saham Gabungan (IHSG)

(IHSG)

Range : 5,930 — 6,065



Created in MetaStock from Equis International

IHSG kembali ditutup melemah pada perdagangan kemarin berada di level 5,979. Indeks tampak sedang menguji EMA 50, yang jika mampu bertahan di atasnya, berpeluang menguat menuju resistance level 6,065.

Stochastic juga menunjukkan kejenuhan indeks terhadap aksi jual dan berpeluang menguat. Namun jika indeks kembali melemah berpotensi menguji 5,930. Hari ini diperkirakan indeks bergerak fluktuatif dengan kecenderungan menguat terbatas.

| Level | Support | Resistance |
|-------|---------|------------|
| I     | 5,930   | 6,065      |
| II    | 5,850   | 6,125      |
| III   | 5,800   | 6,200      |

| Top Active |       |        | Top Foreign Buy |        |             | Top Foreign Sell |        |             | Top Leading |         |         |
|------------|-------|--------|-----------------|--------|-------------|------------------|--------|-------------|-------------|---------|---------|
| Code       | Close | Freq   | Code            | Close  | Value       | Code             | Close  | Value       | Code        | IDX Pts | Chg (%) |
| ANTM       | 2,380 | 93,159 | BBCA            | 34,500 | 124,036,090 | TLKM             | 3,240  | -49,047,294 | BBCA        | 11.6    | 1.6     |
| BRIS       | 2,620 | 88,043 | ASII            | 6,275  | 85,545,675  | ANTM             | 2,380  | -37,792,754 | DCII        | 2.5     | 25.0    |
| AGRO       | 865   | 38,586 | INCO            | 5,400  | 50,754,227  | INTP             | 13,300 | -32,887,173 | UNTR        | 1.5     | 2.0     |
| BBRI       | 4,470 | 37,010 | KLBF            | 1,515  | 42,625,846  | WSKT             | 1,520  | -32,215,858 | EMTK        | 1.5     | 1.6     |
| PGAS       | 1,390 | 33,347 | TOWR            | 950    | 37,899,080  | ICBP             | 9,350  | -30,055,778 | DNET        | 1.4     | 3.4     |
| TLKM       | 3,240 | 27,724 | PGAS            | 1,390  | 22,737,299  | TBIG             | 2,160  | -29,416,036 | Top Lagging |         |         |
| PTBA       | 2,590 | 27,461 | MNCN            | 1,035  | 19,750,011  | INDF             | 6,325  | -27,989,163 | Code        | IDX Pts | Chg (%) |
| WSKT       | 1,520 | 26,848 | PTBA            | 2,590  | 19,530,778  | BBNI             | 5,775  | -27,009,712 | BBRI        | -15.9   | -3.2    |
| INCO       | 5,400 | 22,264 | INKP            | 12,800 | 18,546,313  | BMRI             | 7,050  | -24,355,098 | TLKM        | -12.0   | -4.1    |
| BBKP       | 494   | 22,081 | BBRI            | 4,470  | 16,049,494  | CPIN             | 5,800  | -19,547,643 | BMRI        | -10.0   | -3.4    |
|            |       |        |                 |        |             |                  |        |             | HMSP        | -5.5    | -3.9    |
|            |       |        |                 |        |             |                  |        |             | BRPT        | -5.3    | -6.5    |

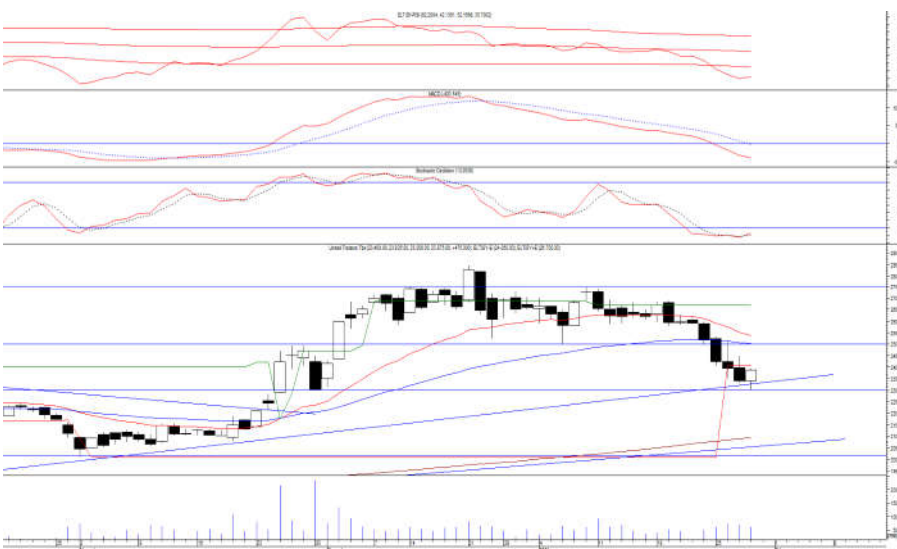
## PT. United Tractors, Tbk.

(UNTR)  $\beta$  :

0.72 Price :

23,875 TP:

24,500-25,000



Created in MetaStock from Equis International

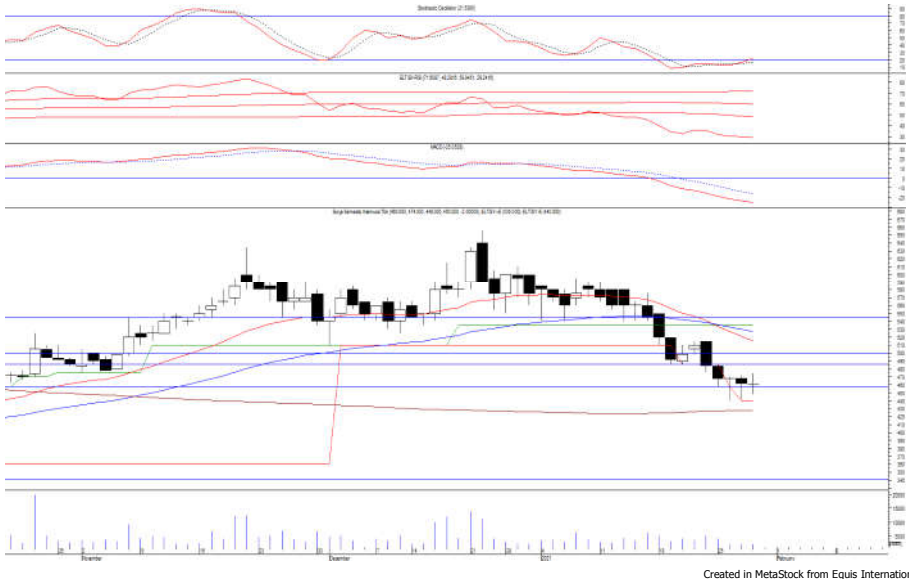
UNTR mampu ditutup menguat pada perdagangan sebelumnya berada di level IDR 23,875.

Harga tampak sedang mencoba bertahan di atas IDR 23,000, di mana berpeluang berlanjut menguat menuju resistance level IDR 24,500 hingga IDR 25,000.

Stochastic yang mengalami bullish crossover di wilayah oversold memberikan peluang penguatan.

**Rekomendasi** : Speculative Buy  
**Entry Level** : 23,675-23,875  
**Take Profit** : 24,500-25,000  
**Stop Loss** : 23,300

**PT. Surya Semesta Internusa, Tbk. (SSIA)  $\beta$  : 0.86 Price : 460 TP: 486-500**



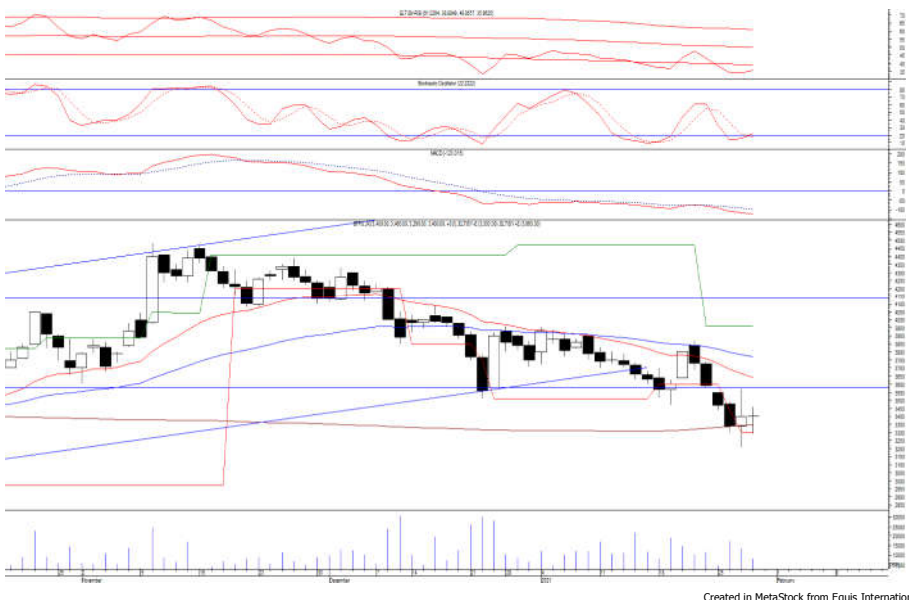
SSIA pada perdagangan kemarin ditutup melemah tipis berada di level IDR 460.

Harga tampak sedang mengalami konsolidasi dan mencoba bertahan di atas 440, di mana berpeluang menguat menuju resistance level IDR 486 hingga IDR 500.

Stochastic yang bergerak meninggalkan wilayah oversold memberikan peluang untuk menguat.

**Rekomendasi : Buy on Weakness**  
**Entry Level : 450-458**  
**Take Profit : 486-500**  
**Stop Loss : 438**

**PT. Bank BTPN Syariah, Tbk. (BTPS)  $\beta$  : N/A Price : 3,400 TP: 3,550-3,600**



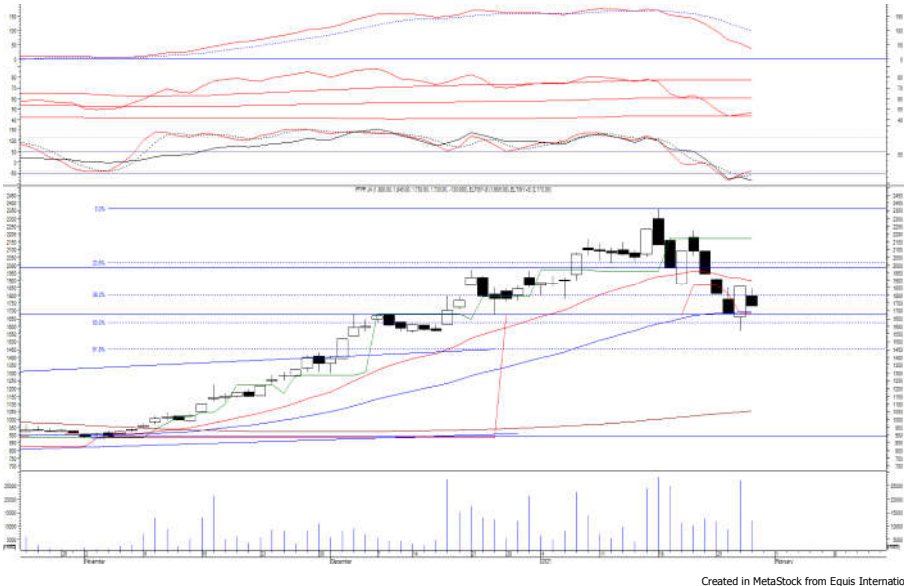
BTPS pada perdagangan sebelumnya ditutup bertahan berada di level IDR 3,400.

Harga tampak sedang mencoba bertahan di atas MA 200, di mana berpeluang menguat dan bergerak menuju resistance level IDR 3,550 hingga IDR 3,600.

Stochastic yang mengalami bullish crossover memberikan peluang untuk menguat. Kecuali harga berbalik melemah hingga di bawah IDR 3,300.

**Rekomendasi : Speculative Buy**  
**Entry Level : 3,350-3,400**  
**Take Profit : 3,550-3,600**  
**Stop Loss : 3,290**

**PT. Pembangunan Perumahan (Persero), Tbk. (PTPP)  $\beta$  : 3,04 Price : 1,730 TP: 1,810-1,865**



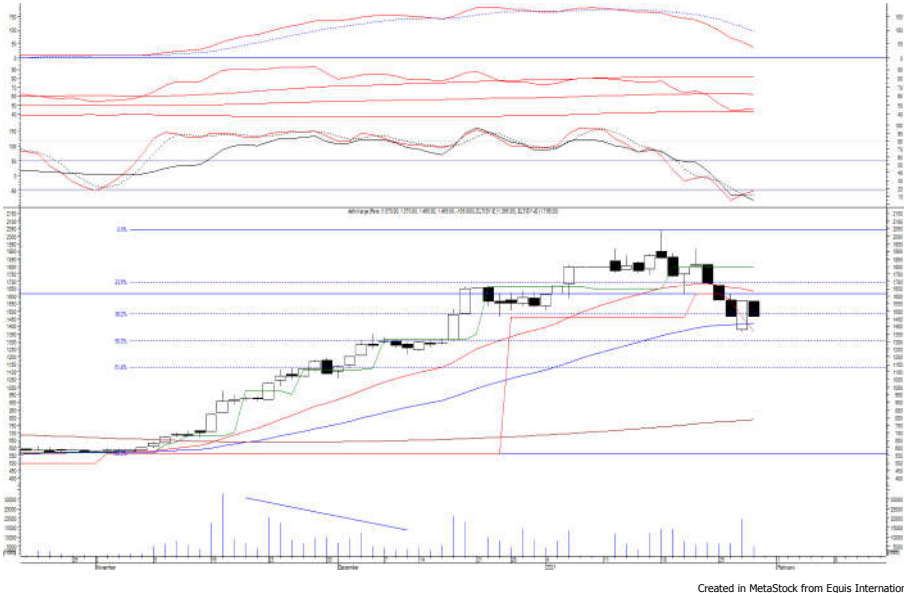
PTPP ditutup melemah pada perdagangan sebelumnya berada di level IDR 1,730.

Harga tampak sedang mengalami konsolidasi dan mencoba bertahan di atas EMA 50, di mana berpeluang menguat menuju resistance level IDR 1,810 hingga IDR 1,865.

Stochastic yang mengalami bullish crossover memberikan peluang terjadinya penguatan.

**Rekomendasi : Buy on Weakness**  
**Entry Level : 1,685-1,715**  
**Take Profit : 1,810-1,865**  
**Stop Loss : 1,640**

**PT. Adhi Karya (Persero), Tbk. (ADHI)  $\beta$  : 2.91 Price : 1,465 TP: 1,570-1,615**



ADHI pada perdagangan kemarin ditutup melemah berada di level IDR 1,465.

Harga tampak sedang mengalami konsolidasi dan mencoba bertahan di atas EMA 50, di mana berpeluang menguat menuju resistance level IDR 1,570 hingga IDR 1,615.

Stochastic yang mengalami bullish crossover memberikan peluang untuk menguat. Kecuali harga berbalik melemah hingga di bawah IDR 1,360.

**Rekomendasi : Buy on Weakness**  
**Entry Level : 1,420-1,450**  
**Take Profit : 1,570-1,615**  
**Stop Loss : 1,350**

**Keterangan:**

- Speculative Buy : Harga menyentuh support, harga dapat saja meneruskan pelemahan, tetapi berpotensi rebound jika harga gagal break support.
  - Buy : Harga bergerak rebound meninggalkan support level.
  - Trading Buy : Harga masih berpotensi naik, tetapi sudah mendekati resistance level.
  - Sell : Harga telah mencapai resistance level.
- Rekomendasi berdasarkan candlestick berlaku sampai 5 atau 8 hari ke depan (maksimal 10 hari), selebihnya dapat diartikan bahwa formasi candlestick gagal.

**Research Division**

|                   |                    |                                  |                  |       |
|-------------------|--------------------|----------------------------------|------------------|-------|
| Danny Eugene      | Head of Research   | danny.eugene@megasekuritas.id    | +62 21 7917 5599 | 62431 |
| Fadlillah Qudsi   | Technical Analyst  | fadlillah.qudsi@megasekuritas.id | +62 21 7917 5599 | 62035 |
| Josua Lois Sinaga | Research Associate | josua.lois@megasekuritas.id      | +62 21 7917 5599 | 62425 |

**Retail Equity Sales Division**

|                      |                                  |                                   |                  |       |
|----------------------|----------------------------------|-----------------------------------|------------------|-------|
| Carsum Kusmady       | Head of Sales, Trading & Dealing | carsum.kusmady@megasekuritas.id   | +62 21 7917 5599 | 62038 |
| Andri Sumarno        | Retail Equity Sales              | andri@megasekuritas.id            | +62 21 7917 5599 | 62045 |
| Andrie Zainal Zen    | Retail Equity Sales              | andrie.zainal@megasekuritas.id    | +62 21 7917 5599 | 62048 |
| Brema Setyawan       | Retail Equity Sales              | brema.setyawan@megasekuritas.id   | +62 21 7917 5599 | 62126 |
| Dewi Suryani         | Retail Equity Sales              | dewi.suryani@megasekuritas.id     | +62 21 7917 5599 | 62441 |
| Ety Sulistyowati     | Retail Equity Sales              | ety.sulistyowati@megasekuritas.id | +62 21 7917 5599 | 62408 |
| Fadel Muhammad Iqbal | Retail Equity Sales              | fadel@megasekuritas.id            | +62 21 7917 5599 | 62164 |
| Syaifathir Muhamad   | Retail Equity Sales              | fathir@megasekuritas.id           | +62 21 7917 5599 | 62179 |

**Corporate Equity Division**
**Fixed Income Sales & Trading**

Tel. +62 7917 5559-62 Fax. +62 21 7917 5965

**Investment Banking**

Tel. +62 21 7917 5599 Fax. +62 21 7919 3900

**PT. Mega Capital Sekuritas**  
 Menara Bank Mega Lt. 2  
 Jl. Kapt P. Tendean, Kav 12-14 A  
 Jakarta Selatan 12790

**DISCLAIMER**

This Document is for information only and for the use of the recipient. It is not to be reproduced or copied or made available to others. Under no circumstances is it to be considered as an offer to sell or solicitation to buy any security. Any recommendation contained in this report may not be suitable for all investors and strictly a personal view and should not be used as a sole judgment for investment. Moreover, although the information contained herein has been obtained from sources believed to be reliable, its accuracy, completeness and reliability cannot be guaranteed. All rights reserved by PT Mega Capital Sekuritas.