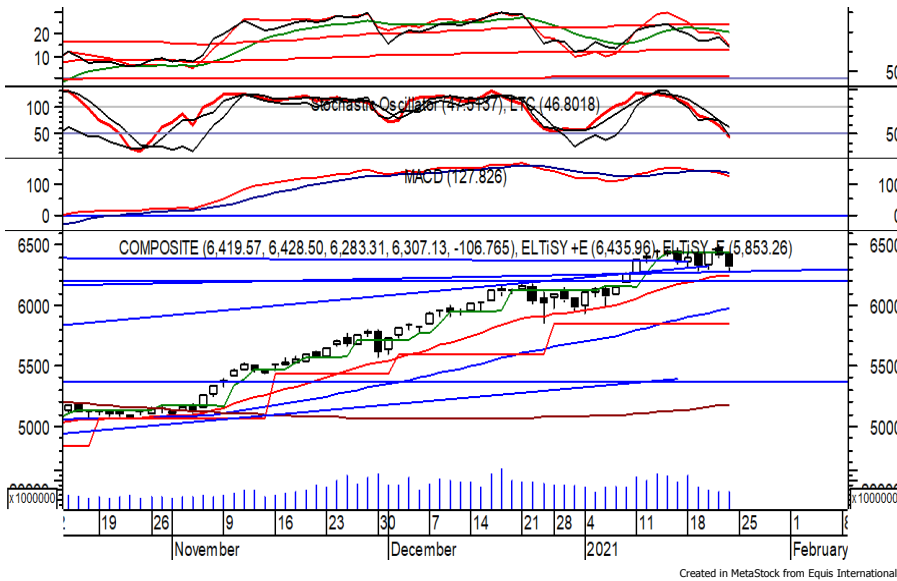


Indeks Harga Saham Gabungan (IHSG)

(IHSG)

Range : 6,200 — 6,435



IHSG ditutup melemah pada perdagangan akhir pekan kemarin berada di level 6,307.

Indeks tampak sedang melanjutkan konsolidasi dan berpotensi menguji EMA 20 dan/atau support level 6,200.

MACD yang cenderung bergerak melemah berpotensi membawa indeks terkoreksi. Namun jika indeks berbalik menguat dapat bergerak menguji resistance level 6,435. Hari ini diperkirakan indeks bergerak fluktuatif dengan kecenderungan melemah terbatas.

Level	Support	Resistance
I	6,200	6,435
II	6,125	6,505
III	6,050	6,570

Top Active			Top Foreign Buy			Top Foreign Sell			Top Leading		
Code	Close	Freq	Code	Close	Value	Code	Close	Value	Code	IDX Pts	Chg (%)
ANTM	2,880	134,964	BBCA	35,400	196,759,810	TLKM	3,390	-109,612,444	EMTK	2.9	3.1
BRIS	3,240	44,070	BMRI	7,200	169,924,355	CPIN	6,350	-62,429,288	SRTG	2.8	25.0
WSKT	1,700	41,773	BBRI	4,720	149,551,675	BFIN	760	-56,383,540	ARTO	1.9	3.2
BBKP	585	31,367	INTP	15,200	53,085,288	BBNI	6,275	-54,068,860	BBCA	0.5	0.1
PGAS	1,680	30,253	BULL	404	22,489,328	PWON	515	-30,830,567	MASA	0.4	4.7
TLKM	3,390	30,219	TOWR	1,000	19,922,792	ACES	1,595	-21,873,506	Top Lagging		
BBRI	4,720	29,304	ANTM	2,880	16,909,706	UNTR	25,175	-21,070,320	Code	IDX Pts	Chg (%)
BCAP	175	27,815	ASII	6,700	16,842.445	BRIS	3,240	-18,956,311	TLKM	-7.7	-2.6
TINS	2,220	27,708	GGRM	40,850	16,800758	PGAS	1,680	-17,204,204	BBRI	-7.4	-1.5
FIRE	950	22,428	PTBA	2,770	13,682,396	EXCL	2,430	-15,484,942	ANTM	-4.4	-6.8
									BRPT	-4.0	-4.7
									ASII	-3.5	-1.5

PT. Bank Pan Indonesia, Tbk.

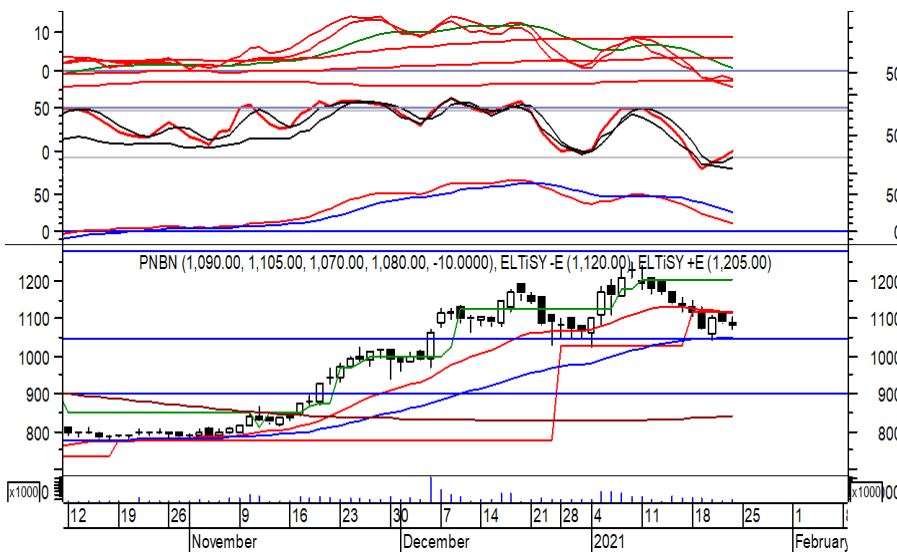
(PNBN) β :

1.61

Price :

1,080

TP: 1,120-1,150



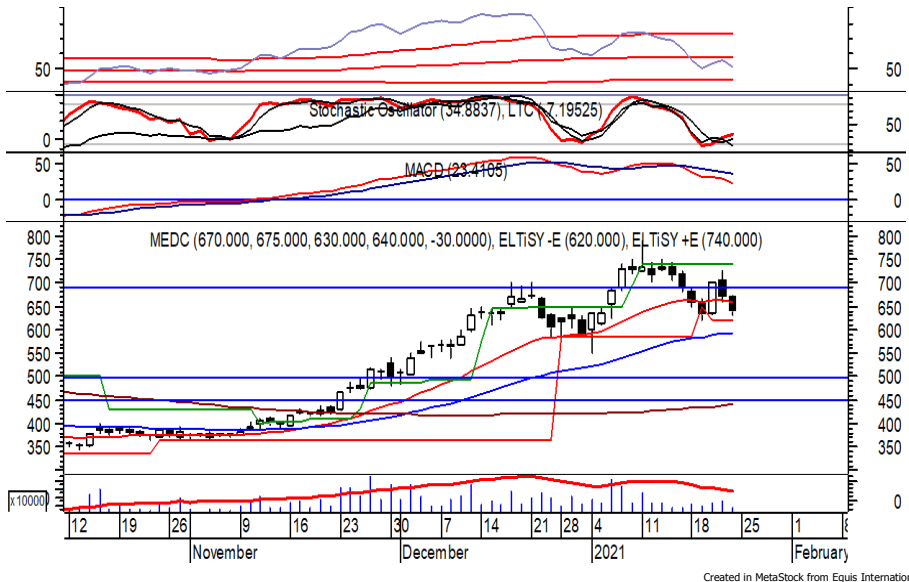
PNBN pada perdagangan sebelumnya ditutup melemah berada di level IDR 1,080.

Harga berpotensi menguji kembali EMA 50 di IDR 1,045, yang jika mampu bertahan di (atas) level tersebut berpeluang menguat menuju resistance level IDR 1,120 hingga IDR 1,150.

Stochastic yang mengalami bullish crossover memberikan peluang untuk menguat.

Rekomendasi : Buy on Weakness
Entry Level : 1,050-1,070
Take Profit : 1,120-1,150
Stop Loss : 1,020

PT. Medco Energi Internasional, Tbk. (MEDC) β : 2.63 Price : 640 TP: 675-690

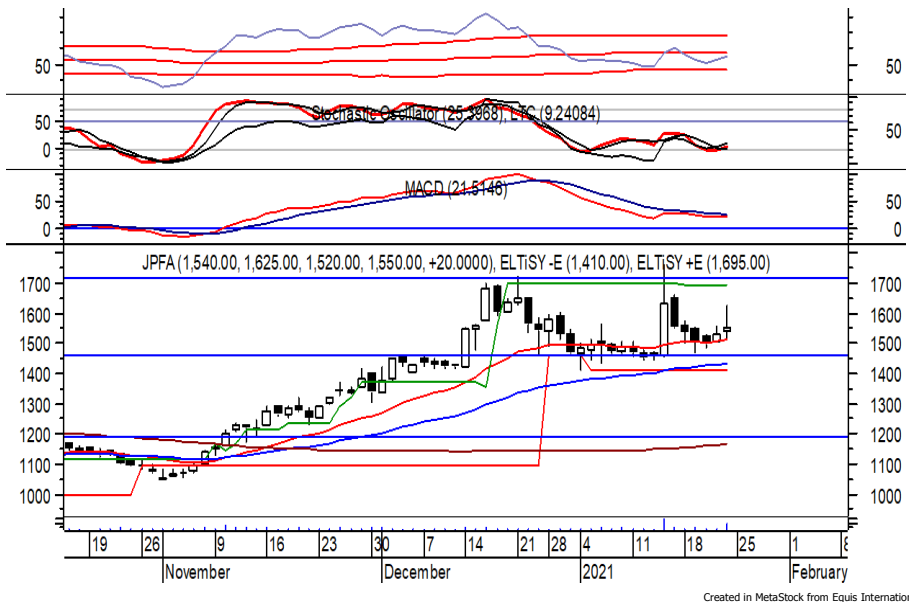


MEDC kembali ditutup melemah pada perdagangan kemarin berada di level IDR 640.

Harga berpotensi menguji support level yang berada di IDR 610, dan berpeluang menguat jika mampu bertahan di (atas) level tersebut, di mana berpeluang menuju resistance level IDR 675 hingga IDR 690. Stochastic yang mengalami bullish crossover memberikan peluang penguatan.

Rekomendasi : Buy on Weakness
Entry Level : 610-630
Take Profit : 675-690
Stop Loss : 580

PT. Japfa Comfeed Indonesia, Tbk. (JPFA) β : 1.64 Price : 1,550 TP: 1,625-1,695



JPFA mampu ditutup menguat pada perdagangan kemarin berada di level IDR 1,550.

Harga tampak sedang mencoba bertahan di atas EMA 20, di mana berpeluang melanjutkan penguatannya menuju resistance level IDR 1,625 hingga IDR 1,695.

Stochastic yang mengalami bullish crossover memberikan peluang penguatan. Kecuali harga berbalik melemah hingga di bawah IDR 1,480.

Rekomendasi : Buy on Weakness
Entry Level : 1,510-1,530
Take Profit : 1,625-1,695
Stop Loss : 1,475

PT. Indocement Tunggal Prakarsa, Tbk. (INTP) β : 1.37 Price : 15,200 BF: 14,800-14,600

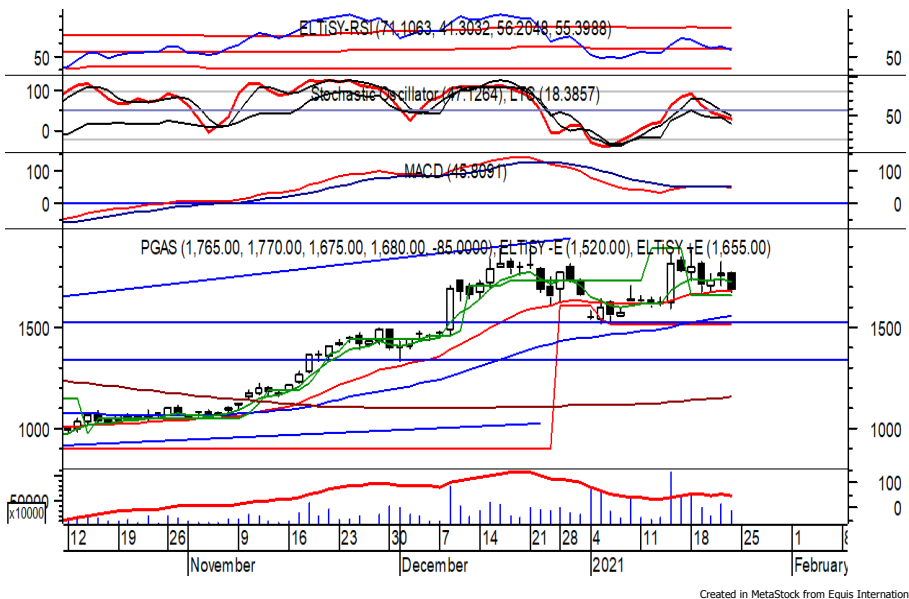


INTP kembali ditutup melemah pada perdagangan sebelumnya berada di level IDR 15,200.

Harga tampak belum mampu bertahan di atas IDR 15,525, di mana berpotensi melanjutkan pelemahannya dan bergerak menuju support level IDR 14,800 hingga IDR 14,600. Stochastic yang mengalami bearish crossover berpotensi membawa harga melemah. Kecuali mampu menguat hingga di atas IDR 15,750.

Rekomendasi : Sell on Strength
Exit Level : 15,500-15,300
Bottom Fishing : 14,800-14,600
Buy Back : 15,800/16,000

PT. Perusahaan Gas Negara, Tbk. (PGAS) β : 2.39 Price : 1,680 TP: 1,770-1,820



PGAS ditutup melemah pada perdagangan akhir pekan kemarin berada di level IDR 1,680.

Harga tampak sedang mencoba bertahan di atas EMA 20, di mana berpeluang mengalami konsolidasi dan bergerak menuju resistance level IDR 1,770 hingga IDR 1,820. Akan tetapi stochastic yang cenderung melemah berpotensi menghambat laju penguatan harga yang jika berbalik melemah dapat menguji support level di IDR 1,520.

Rekomendasi : Buy on Weakness
Entry Level : 1,620-1,650
Take Profit : 1,770-1,820
Stop Loss : 1,580

Keterangan:

- Speculative Buy : Harga menyentuh support, harga dapat saja meneruskan pelemahan, tetapi berpotensi rebound jika harga gagal break support.
 - Buy : Harga bergerak rebound meninggalkan support level.
 - Trading Buy : Harga masih berpotensi naik, tetapi sudah mendekati resistance level.
 - Sell : Harga telah mencapai resistance level.
- Rekomendasi berdasarkan candlestick berlaku sampai 5 atau 8 hari ke depan (maksimal 10 hari), selebihnya dapat diartikan bahwa formasi candlestick gagal.

Research Division

Danny Eugene	Head of Research	danny.eugene@megasekuritas.id	+62 21 7917 5599	62431
Fadlillah Qudsi	Technical Analyst	fadlillah.qudsi@megasekuritas.id	+62 21 7917 5599	62035
Josua Lois Sinaga	Research Associate	josua.lois@megasekuritas.id	+62 21 7917 5599	62425

Retail Equity Sales Division

Carsum Kusmady	Head of Sales, Trading & Dealing	carsum.kusmady@megasekuritas.id	+62 21 7917 5599	62038
Andri Sumarno	Retail Equity Sales	andri@megasekuritas.id	+62 21 7917 5599	62045
Andrie Zainal Zen	Retail Equity Sales	andrie.zainal@megasekuritas.id	+62 21 7917 5599	62048
Brema Setyawan	Retail Equity Sales	brema.setyawan@megasekuritas.id	+62 21 7917 5599	62126
Dewi Suryani	Retail Equity Sales	dewi.suryani@megasekuritas.id	+62 21 7917 5599	62441
Ety Sulistyowati	Retail Equity Sales	ety.sulistyowati@megasekuritas.id	+62 21 7917 5599	62408
Fadel Muhammad Iqbal	Retail Equity Sales	fadel@megasekuritas.id	+62 21 7917 5599	62164
Syaifathir Muhamad	Retail Equity Sales	fathir@megasekuritas.id	+62 21 7917 5599	62179

Corporate Equity Division
Fixed Income Sales & Trading

Tel. +62 7917 5559-62 Fax. +62 21 7917 5965

Investment Banking

Tel. +62 21 7917 5599 Fax. +62 21 7919 3900

PT. Mega Capital Sekuritas
 Menara Bank Mega Lt. 2
 Jl. Kapt P. Tendean, Kav 12-14 A
 Jakarta Selatan 12790

DISCLAIMER

This Document is for information only and for the use of the recipient. It is not to be reproduced or copied or made available to others. Under no circumstances is it to be considered as an offer to sell or solicitation to buy any security. Any recommendation contained in this report may not be suitable for all investors and strictly a personal view and should not be used as a sole judgment for investment. Moreover, although the information contained herein has been obtained from sources believed to be reliable, its accuracy, completeness and reliability cannot be guaranteed. All rights reserved by PT Mega Capital Sekuritas.