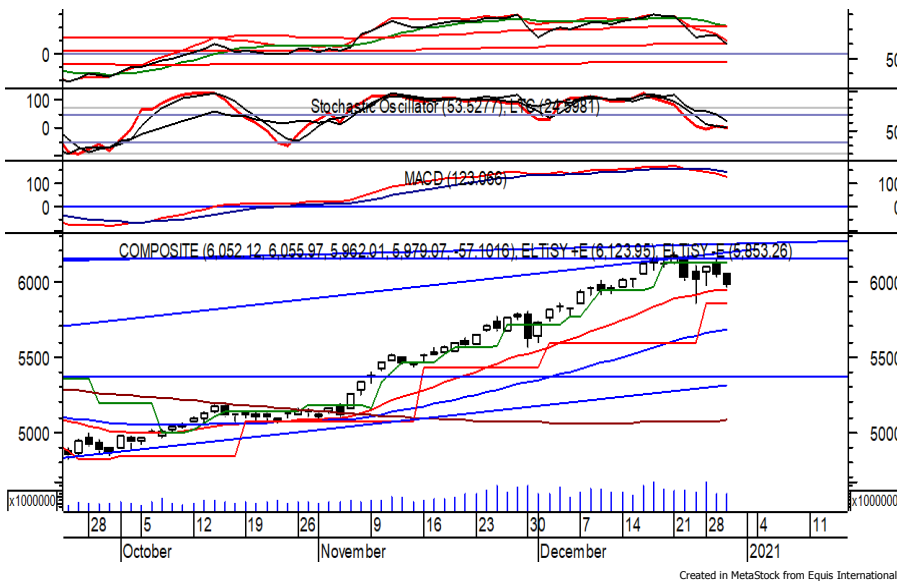


## Indeks Harga Saham Gabungan (IHSG)

(IHSG)

Range : 5,910 — 6,125



IHSG pada perdagangan sebelumnya ditutup melemah berada di level 5,979.

Indeks tampak sedang melanjutkan konsolidasi dan menguji EMA 20. Peluang penguatan terjadi jika indeks mampu bertahan di atas EMA 20, di mana berpeluang menuju resistance level 6,055 hingga 6,125.

Namun MACD yang cenderung melemah berpotensi menghambat laju penguatan indeks. Hari ini diperkirakan indeks bergerak fluktuatif dengan kecenderungan menguat terbatas.

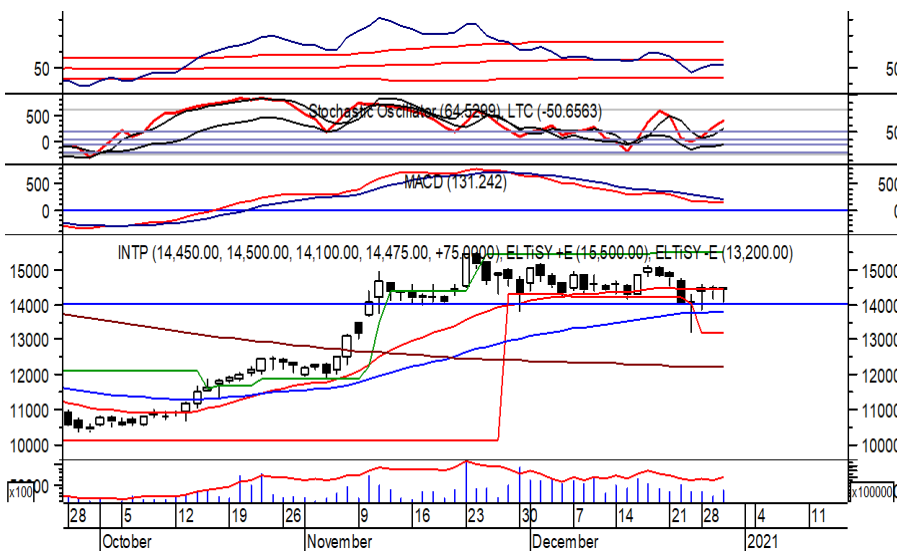
| Level | Support | Resistance |
|-------|---------|------------|
| I     | 5,910   | 6,055      |
| II    | 5,850   | 6,125      |
| III   | 5,800   | 6,200      |

| Top Active |       |        | Top Foreign Buy |       |             | Top Foreign Sell |       |             | Top Leading |         |         |
|------------|-------|--------|-----------------|-------|-------------|------------------|-------|-------------|-------------|---------|---------|
| Code       | Close | Freq   | Code            | Close | Volume      | Code             | Close | Volume      | Code        | IDX Pts | Chg (%) |
| ANTM       | 1,935 | 56,364 | KPIG            | 106   | 195,054,200 | DOID             | 352   | -26,693,800 | EMTK        | 4.9     | 7.7     |
| PTPP       | 1,865 | 35,055 | MAPI            | 790   | 35,639,900  | ENRG             | 129   | -18,814,800 | BYAN        | 3.0     | 7.3     |
| WSKT       | 1,440 | 31,982 | FREN            | 67    | 33,953,600  | PWON             | 510   | -18,742,000 | ICBP        | 2.8     | 3.0     |
| BBKP       | 575   | 28,766 | ZINC            | 190   | 26,163,300  | BMTR             | 290   | -13,553,200 | DNET        | 1.6     | 3.9     |
| PGAS       | 1,655 | 28,306 | MNCN            | 1,140 | 22,448,600  | WSBP             | 274   | -11,105,500 | IPTV        | 1.4     | 13.9    |
| TLKM       | 3,310 | 24,959 | BBTN            | 1,725 | 21,366,700  | BBKP             | 575   | -10,863,600 | Top Lagging |         |         |
| FPNI       | 362   | 23,680 | PTPP            | 1,865 | 21,164,900  | KOTA             | 338   | -10,827,400 | Code        | IDX Pts | Chg (%) |
| BRIS       | 2,250 | 23,623 | BULL            | 350   | 20,764,200  | BRMS             | 83    | -10,254,000 | TLKM        | -9.5    | -3.2    |
| ENRG       | 129   | 20,358 | BUMI            | 72    | 19,874,900  | SRIL             | 262   | -10,039,600 | TPIA        | -4.3    | -2.9    |
| ADRO       | 1,430 | 16,298 | ASII            | 6,025 | 10,779,677  | PGAS             | 1,655 | -9,652,411  | BMRI        | -4.0    | -1.6    |
|            |       |        |                 |       |             |                  |       |             | MYOR        | -3.9    | -6.9    |
|            |       |        |                 |       |             |                  |       |             | BRPT        | -3.2    | -3.5    |

## PT. Indocement Tunggal Prakarsa, Tbk. (INTP)

$\beta$  : 1.38

Price : 14,475 TP: 14,850-15,100



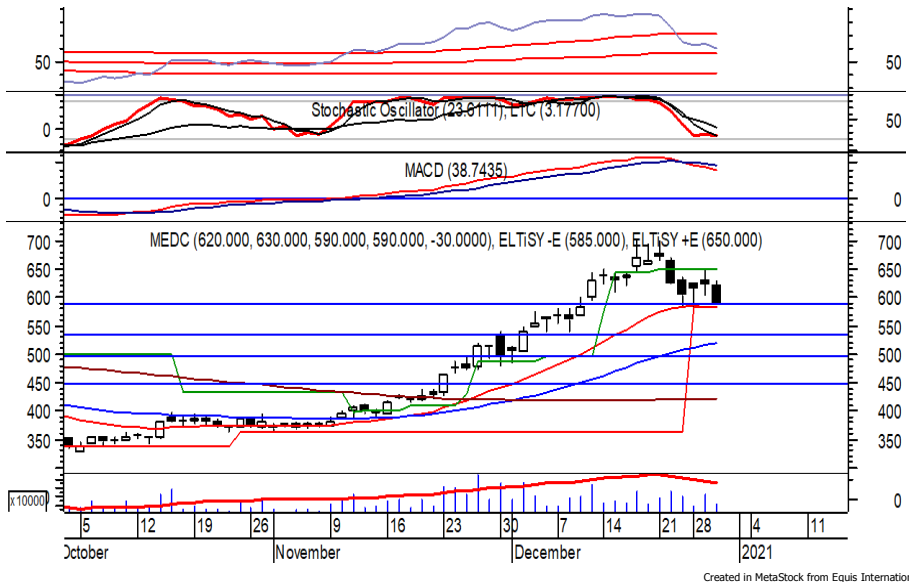
INTP mampu ditutup menguat pada perdagangan sebelumnya berada di IDR 14,475.

Harga tampak sedang mencoba bertahan di atas support level IDR 14,000, di mana berpeluang melanjutkan penguatannya menuju resistance level IDR 14,850 hingga IDR 15,100.

Stochastic berada di wilayah netral dengan kecenderungan menguat. Kecuali melemah di bawah IDR 13,850.

- Rekomendasi** : Buy on Weakness
- Entry Level** : 14,050-14,300
- Take Profit** : 14,850-15,100
- Stop Loss** : 13,800

**PT. Medco Energi International, Tbk. (MEDC)  $\beta$  : 2,70 Price : 590 TP: 630-650**



MEDC ditutup melemah pada perdagangan sebelumnya berada di IDR 590.

Harga tampak sedang menguji EMA 20 dan/atau support level di IDR 585, di mana berpeluang menguat menuju resistance level IDR 630 hingga IDR 650.

Namun MACD yang cenderung melemah berpotensi menghambat laju penguatan harga yang jika berbalik melemah berpotensi menguji IDR 500.

- Rekomendasi** : Speculative Buy
- Entry Level** : 575-590
- Take Profit** : 630-650
- Stop Loss** : 550

**PT. Vale Indonesia, Tbk. (INCO)  $\beta$  : 1.58 Price : 5,100 TP: 5,350-5,500**



INCO pada perdagangan sebelumnya ditutup melemah berada di level IDR 5,100.

Harga tampak sedang mencoba bertahan di atas support level IDR 5,000, di mana berpeluang menguat menuju resistance level IDR 5,350 hingga IDR 5,500.

Stochastic berada di wilayah netral dengan kecenderungan menguat. Kecuali harga berbalik melemah hingga di bawah IDR 4,950.

- Rekomendasi** : Buy on Weakness
- Entry Level** : 5,000-5,075
- Take Profit** : 5,350-5,500
- Stop Loss** : 4,930

**PT. Bank Central Asia, Tbk.**

**(BBCA)  $\beta$  :**

**0.95**

**Price : 33,850**

**TP: 34,150-34,525**



BBCA mampu ditutup menguat pada perdagangan kemarin berada di level IDR 33,850.

Harga berpotensi kembali menguji EMA 20 hingga support level di IDR 33,000, yang jika mampu bertahan di atas level tersebut, berpotensi menguat menuju resistance level IDR 34,150 hingga IDR 34,525. Stochastic yang mengalami bullish crossover memberikan peluang penguatan.

**Rekomendasi : Buy on Weakness**  
**Entry Level : 33,000-33,400**  
**Take Profit : 34,150-34,525**  
**Stop Loss : 32,700**

**PT. Bank BTPN Syariah, Tbk.**

**(BTSP)  $\beta$  :**

**N/A**

**Price : 3,750**

**TP: 3,900-3,950**



BTSP pada perdagangan sebelumnya ditutup melemah berada di level IDR 3,750.

Harga berpotensi menguji support level yang berada di IDR 3,650, yang jika mampu bertahan di atasnya berpotensi menguat menuju resistance level IDR 3,900 hingga IDR 3,950.

RSI mulai bergerak meninggalkan wilayah oversold dan berpotensi membawa harga menguat. Kecuali terus melemah hingga di bawah IDR 3,570.

**Rekomendasi : Buy on Weakness**  
**Entry Level : 3,650-3,710**  
**Take Profit : 3,900-3,950**  
**Stop Loss : 3,550**

**Keterangan:**

- Speculative Buy : Harga menyentuh support, harga dapat saja meneruskan pelemahan, tetapi berpotensi rebound jika harga gagal break support.
  - Buy : Harga bergerak rebound meninggalkan support level.
  - Trading Buy : Harga masih berpotensi naik, tetapi sudah mendekati resistance level.
  - Sell : Harga telah mencapai resistance level.
- Rekomendasi berdasarkan candlestick berlaku sampai 5 atau 8 hari ke depan (maksimal 10 hari), selebihnya dapat diartikan bahwa formasi candlestick gagal.

**Research Division**

|                   |                    |                                  |                  |       |
|-------------------|--------------------|----------------------------------|------------------|-------|
| Danny Eugene      | Head of Research   | danny.eugene@megasekuritas.id    | +62 21 7917 5599 | 62431 |
| Fadlillah Qudsi   | Technical Analyst  | fadlillah.qudsi@megasekuritas.id | +62 21 7917 5599 | 62035 |
| Josua Lois Sinaga | Research Associate | josua.lois@megasekuritas.id      | +62 21 7917 5599 | 62425 |

**Retail Equity Sales Division**

|                      |                                  |                                   |                  |       |
|----------------------|----------------------------------|-----------------------------------|------------------|-------|
| Carsum Kusmady       | Head of Sales, Trading & Dealing | carsum.kusmady@megasekuritas.id   | +62 21 7917 5599 | 62038 |
| Andri Sumarno        | Retail Equity Sales              | andri@megasekuritas.id            | +62 21 7917 5599 | 62045 |
| Andrie Zainal Zen    | Retail Equity Sales              | andrie.zainal@megasekuritas.id    | +62 21 7917 5599 | 62048 |
| Brema Setyawan       | Retail Equity Sales              | brema.setyawan@megasekuritas.id   | +62 21 7917 5599 | 62126 |
| Dewi Suryani         | Retail Equity Sales              | dewi.suryani@megasekuritas.id     | +62 21 7917 5599 | 62441 |
| Ety Sulistyowati     | Retail Equity Sales              | ety.sulistyowati@megasekuritas.id | +62 21 7917 5599 | 62408 |
| Fadel Muhammad Iqbal | Retail Equity Sales              | fadel@megasekuritas.id            | +62 21 7917 5599 | 62164 |
| Syaifathir Muhamad   | Retail Equity Sales              | fathir@megasekuritas.id           | +62 21 7917 5599 | 62179 |

**Corporate Equity Division**

|           |                            |                            |                  |       |
|-----------|----------------------------|----------------------------|------------------|-------|
| Widianita | Marketing Equity Corporate | widianita@megasekuritas.id | +62 21 7917 5599 | 62439 |
|-----------|----------------------------|----------------------------|------------------|-------|

**Fixed Income Sales & Trading**

Tel. +62 7917 5559-62 Fax. +62 21 7917 5965

**Investment Banking**

Tel. +62 21 7917 5599 Fax. +62 21 7919 3900

**PT. Mega Capital Sekuritas**  
 Menara Bank Mega Lt. 2  
 Jl. Kapt P. Tendean, Kav 12-14 A  
 Jakarta Selatan 12790

**DISCLAIMER**

This Document is for information only and for the use of the recipient. It is not to be reproduced or copied or made available to others. Under no circumstances is it to be considered as an offer to sell or solicitation to buy any security. Any recommendation contained in this report may not be suitable for all investors and strictly a personal view and should not be used as a sole judgment for investment. Moreover, although the information contained herein has been obtained from sources believed to be reliable, its accuracy, completeness and reliability cannot be guaranteed. All rights reserved by PT Mega Capital Sekuritas.