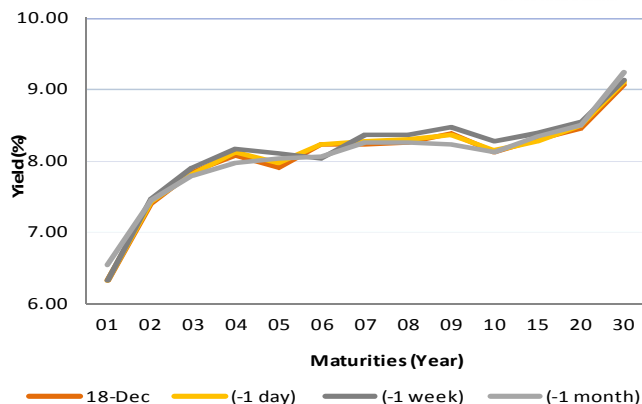


## Fixed Income Daily Notes

### Indonesia Government Bonds Yield

Maturities (Year)	18-Dec	(-1 day)	(-1 week)	(-1 month)
01	6.33	6.33	6.33	6.54
02	7.41	7.42	7.45	7.44
03	7.84	7.82	7.90	7.80
04	8.07	8.11	8.16	7.97
05	7.91	7.96	8.09	8.04
06	8.23	8.23	8.04	8.06
07	8.24	8.28	8.37	8.26
08	8.26	8.30	8.37	8.26
09	8.39	8.36	8.46	8.23
10	8.12	8.15	8.28	8.12
15	8.31	8.28	8.39	8.35
20	8.46	8.49	8.54	8.50
30	9.07	9.12	9.13	9.24

Source: Bloomberg



## Global Market Update

- Yesterday, December 18 2018, US 10-years treasury note yield fell to 2.82% after US stock market weakening amidst of lower oil price. On the other hand, yield benchmark global bond moved varied, reflected by yield 10-years UK Gilt, which moved upward to 1.28%, while 10-years German Bunds moved downward to 0.24%.
- Yield 10-years US Treasury note kemarin, 18 Desember 2018, ditutup turun ke level 2,82% akibat masih melemahnya pasar saham AS di tengah turunnya harga minyak dunia. Di sisi lain, yield obligasi benchmark global ditutup bervariasi, terlihat dari yield 10-years UK Gilt yang naik ke level 1,28%, sementara 10-years German Bunds ditutup turun ke level 0,24%.

## Domestic Market Update

- Today, BI would hold Governor Council Meeting (RDG) to discuss about monetary policy, especially about BI interest rate (7-DRR). Consensus of economist and MCS estimates predicted that BI would not change 7-DRR at 6.00%.
- Pada hari ini hingga esok, Bank Indonesia (BI) akan mengadakan Rapat Dewan Gubernur (RDG) bulanan untuk membahas kebijakan moneter hingga 1 bulan ke depan. Pada RDG kali ini juga akan diputuskan kebijakan terkait tingkat suku bunga BI, atau biasa disebut 7-DRR. Dari pihak MCS serta konsensus pengamat memprediksi BI tidak akan mengubah tingkat suku bunganya pada RDG kali ini.
- Today, Government bond prices on the secondary market are likely to strengthen because of lower US yield. Rupiah will be ranging from IDR 14,384 - 14,458 and yield of 10-years benchmark bond (FR0064) will be ranging from 8.03% - 8.08%.
- Hari ini, pergerakan harga SBN secara umum di pasar sekunder diprediksi mengalami penguatan seiring dengan menurunnya yield AS. Nilai tukar rupiah terhadap dolar AS diprediksi bergerak pada kisaran Rp 14.384 – Rp 14.458, sedangkan yield benchmark 10 tahun (FR0064) pada perdagangan hari ini diperkirakan bergerak di rentang 8,03% - 8,08%.

Most Active Government Bonds	Last Price	Last Yield	Volume (IDR bn)
ORI015	100.78	8.01	1428
FR0061	97.30	7.92	1108
FR0077	101.25	5.93	723
FR0071	104.92	8.27	702
FR0069	100.50	6.19	456
FR0063	91.41	4.90	430
FR0078	101.47	8.04	423
ORI013	99.75	6.91	372
FR0072	99.50	8.30	322
FR0056	100.89	8.21	306

Most Active Corporate Bonds	Last Price	Last Yield	Volume (IDR bn)	
MEDC03ACN2	idA+	101.28	8.69	381
NISPO3ACN1	idAAA	98.50	5.97	150
PPLN12B	idAAA	114.72	7.46	111
SMFP04BCN3	idAAA	96.78	6.05	100
ISAT02ECN2	idAAA	93.25	7.21	96
BEXI04ACN1	idAAA	97.79	8.50	80
SMII01CCN1	idAAA	94.31	7.31	80
SMBNI01CN2	idAAA(sy)	100.89		77
SMASDF01ACN1	AAA(idn)sy	100.04	6.14	67
ADMFO4ACN3	idAAA	100.25	6.19	62

Global Stock Markets	Last Price	Chg (bps)	% Chg	% YTD
Indonesia (JCI)	6082	-7.44	-0.12%	-4.31%
Malaysia (KLCI)	1635	-6.31	-0.38%	-8.99%
Thailand (SET)	1583	-18.29	-1.14%	-9.72%
Singapore (STI)	3046	-68.71	-2.21%	-10.5%
Hang Seng	25814	-273.73	-1.05%	-13.7%
Nikkei 225	21115	-391.43	-1.82%	-7.25%
Shanghai	2577	-21.33	-0.82%	-22.09%
Dow Jones (DJIA)	23676	82.66	0.35%	-4.22%
London (FTSE 100)	6702	-71.65	-1.06%	-12.83%
DAX	10741	-31.31	-0.29%	-16.9%

FX Rate	18-Dec		
	18-Dec	(-1 day)	(-1 week)
USD/IDR	14,421	14,586	14,572
GBP/USD	1.264	1.263	1.249
USD/JPY	112.5	112.8	113.4
USD/SGD	1.370	1.373	1.374
USD/THB	32.71	32.80	32.83
USD/MYR	4.195	4.169	4.185

Macroeconomic Data	Nov-18	Oct-18	Sep-18
Consumer Price Index (MoM)	0.27	0.28	-0.20
Consumer Price Index (YoY)	3.23	3.16	2.88
Core Inflation (YoY)	3.03	2.94	2.82
BI 7-Day RR Rate (%)	6.00	5.75	5.75
Foreign Reserve (US\$ Bn)	117.20	115.20	114.80

Indonesia Sovereign CDS	2-year	5-year	10-year
As of			
18-Dec	53.36	133.06	208.31
(-1 Day)	54.09	134.88	210.55
(-1 Week)	63.35	141.00	218.20
(-1 Month)	75.34	156.29	233.31
(-1 Year)	35.54	89.09	155.57

Global Bonds	18-Dec			
	18-Dec	(-1 day)	(-1 week)	(-1 month)
<b>Fed Fund Rate &amp; US T-Bonds Yield</b>				
Fed Fund Rate	2.25	2.25	2.25	2.25
2-Year	2.65	2.69	2.77	2.81
5-Year	2.65	2.69	2.74	2.89
10-Year	2.82	2.86	2.88	3.06
30-Year	3.07	3.11	3.13	3.32
<b>10-Year Government Bond Yield</b>				
UK	1.28	1.26	1.19	1.38
Germany	0.24	0.26	0.23	0.35
France	0.71	0.74	0.71	0.76
China	3.38	3.38	3.28	3.38
Japan	0.02	0.03	0.04	0.10
Korea	2.73	2.73	2.73	2.73
Thailand	2.63	2.67	2.64	2.72
Malaysia	4.09	4.10	4.10	4.14
Singapore	2.15	2.20	2.26	2.43
<b>Indonesia USD Bond Yield</b>				
INDO-22	3.96	3.97	4.09	4.20
INDO-27	4.50	4.54	4.69	4.85
INDO-47	5.21	5.26	5.41	5.55

Money Market	18-Dec			
	18-Dec	(-1 day)	(-1 week)	(-1 month)
<b>JIBOR</b>				
O/N	5.90	5.91	5.92	5.98
1M	7.56	7.54	7.33	7.30
3M	7.71	7.71	7.67	7.71
<b>LIBOR</b>				
1M	2.47	2.47	2.43	2.31
3M	2.80	2.80	2.78	2.65
6M	2.90	2.90	2.88	2.86
<b>Indonesia Interest Rates</b>				
Deposit 1M	6.24	6.26	6.20	6.13
Lending	14.0	13.6	13.9	13.8

Benchmark	18-Dec	(-1 day)	Change	Yield
FR0061	97.26	97.20	7	7.93%
FR0059	92.91	92.53	38	8.18%
FR0074	92.77	92.34	43	8.40%
FR0072	97.96	97.47	49	8.47%

### Government Bond Ownership As of December 14, 2018 (in Trillion)

Holders	2013	2014	2015	2016	2017	11-Dec-18	12-Dec-18	13-Dec-18	14-Dec-18
Banks	335.43	375.55	350.07	399.46	491.61	648.70	442.93	632.40	638.81
Bank Indonesia	44.44	41.63	148.91	134.25	141.83	85.90	91.56	103.13	96.91
Mutual Fund	42.50	45.79	61.60	85.66	104.00	116.69	96.45	116.58	116.62
Insurance	129.55	150.60	171.62	238.24	150.80	200.98	153.11	201.44	201.47
<b>Foreign Investor</b>	<b>323.83</b>	<b>461.35</b>	<b>558.52</b>	<b>665.81</b>	<b>836.15</b>	<b>896.31</b>	<b>875.35</b>	<b>892.66</b>	<b>892.33</b>
Pension Fund	39.47	43.30	49.83	87.28	198.06	212.60	168.55	212.61	212.66
Individual Investors	32.48	30.41	42.53	57.75	59.84	76.56	54.51	76.54	76.55
Others	47.56	61.32	78.76	104.84	117.48	136.71	99.02	136.08	136.10
<b>Total</b>	<b>995.25</b>	<b>1,209.96</b>	<b>1,461.85</b>	<b>1,773.28</b>	<b>2,099.77</b>	<b>2,369.14</b>	<b>1,981.47</b>	<b>2,371.45</b>	<b>2,371.45</b>

Source: Bloomberg, IDX & DJPPR

December 19, 2018



**Government Bonds Prices**

**Closing Price Data : 18-Dec-2018**

Series	Maturity	TTM	Coupon	Price	YTM	Price (-1)	Price Spread (bps)
FR0069	15-Apr-19	0.32	7.875%	100.47	6.28%	100.51	-4.1
FR0036	15-Sep-19	0.74	11.500%	103.50	6.55%	103.50	0.0
FR0031	15-Nov-20	1.91	11.000%	106.55	7.25%	106.49	5.9
FR0034	15-Jun-21	2.49	12.800%	111.61	7.59%	111.23	37.7
FR0053	15-Jul-21	2.58	8.250%	101.17	7.73%	101.25	-7.6
FR0061	15-May-22	3.41	7.000%	97.26	7.93%	97.20	6.8
FR0035	15-Jun-22	3.49	12.900%	114.58	8.03%	114.58	0.0
FR0043	15-Jul-22	3.58	10.250%	106.89	7.99%	106.89	-0.1
<b>FR0063</b>	<b>15-May-23</b>	<b>4.41</b>	<b>5.625%</b>	<b>91.34</b>	<b>7.99%</b>	<b>91.18</b>	<b>16.2</b>
FR0046	15-Jul-23	4.58	9.500%	105.47	8.04%	105.10	37.4
FR0039	15-Aug-23	4.66	11.750%	113.75	8.14%	113.54	20.8
FR0070	15-Mar-24	5.24	8.375%	100.90	8.16%	100.78	12.0
FR0077	15-May-24	5.41	8.125%	101.14	7.86%	100.92	21.7
FR0044	15-Sep-24	5.75	10.000%	108.21	8.17%	108.21	0.0
FR0040	15-Sep-25	6.75	11.000%	114.39	8.17%	114.09	30.5
FR0037	15-Sep-26	7.75	12.000%	121.18	8.24%	120.90	28.0
FR0056	15-Sep-26	7.75	8.375%	100.97	8.20%	100.66	31.5
FR0059	15-May-27	8.41	7.000%	92.91	8.18%	92.53	37.5
FR0042	15-Jul-27	8.58	10.250%	111.89	8.28%	111.74	15.0
FR0047	15-Feb-28	9.17	10.000%	110.54	8.33%	110.73	-18.7
<b>FR0064</b>	<b>15-May-28</b>	<b>9.41</b>	<b>6.125%</b>	<b>87.32</b>	<b>8.08%</b>	<b>87.12</b>	<b>19.5</b>
FR0071	15-Mar-29	10.25	9.000%	104.79	8.29%	104.45	34.0
FR0078	15-May-29	10.41	8.500%	101.46	8.04%	101.18	28.4
FR0052	15-Aug-30	11.67	10.500%	115.75	8.36%	114.75	100.0
FR0073	15-May-31	12.41	8.750%	102.39	8.43%	102.65	-25.5
FR0054	15-Jul-31	12.58	9.500%	108.98	8.33%	108.20	77.9
FR0058	15-Jun-32	13.50	8.250%	98.79	8.40%	98.21	57.5
FR0074	15-Aug-32	13.67	7.500%	92.77	8.40%	92.34	42.8
<b>FR0065</b>	<b>15-May-33</b>	<b>14.42</b>	<b>6.625%</b>	<b>86.32</b>	<b>8.27%</b>	<b>86.36</b>	<b>-4.2</b>
FR0068	15-Mar-34	15.25	8.375%	98.99	8.49%	98.72	27.2
FR0072	15-May-36	17.42	8.250%	97.96	8.47%	97.47	49.0
FR0045	15-May-37	18.42	9.750%	108.00	8.86%	108	0.0
<b>FR0075</b>	<b>15-May-38</b>	<b>19.42</b>	<b>7.500%</b>	<b>91.16</b>	<b>8.43%</b>	<b>90.94</b>	<b>22.4</b>
FR0050	15-Jul-38	19.59	10.500%	117.80	8.60%	117.80	0.0
FR0057	15-May-41	22.42	9.500%	107.28	8.75%	107.28	0.0
FR0062	15-Apr-42	23.34	6.375%	77.19	8.67%	77.19	0.0
FR0067	15-Jul-43	24.59	8.750%	100.16	8.73%	100.16	0.0
FR0076	15-May-48	29.43	7.375%	83.79	9.12%	83.16	62.9

Source: Bloomberg, IBPA & MCS Estimates

## Macroeconomic Indicator Calendar (December 17 - December 21 2018)

### INDONESIA

Date	Indicator	Series Data	Actual	Previous	Projection
17	Balance of Trade	Nov-18	USD -2.08 billion	USD -1.77 billion	USD -0.17 billion
20	7-Days Repo Rate (7-DRR)	-	-	6.00%	6.00%

### GLOBAL

Date	Indicator	Country	Series Data	Actual	Previous	Projection
17	Inflation Rate Final (YoY)	Euro Area	Nov-18	1.9%	2.2%	2.0%
18	Ifo Business Climate	Germany	Dec-18	101.0	102.0	102.7
19	Inflation Rate (YoY)	Great Britain	Nov-18	-	2.4%	2.5%
19	Crude Oil Inventory	US	Week Ended, Dec 14 - 2018		-1.21 million barrel	-2.99 million barrel
20	Fed Funds Rate	US	-	-	2.25%	2.50%
20	BoJ Interest Rate	Japan	-	-	-0.1%	-0.1%
20	BoE Interest rate	Great Britain	-	-	0.75%	0.75%
20	Initial Jobless Claims	US	Week Ended, Dec 15 - 2018	-	206 thousand	226 thousand
20	Continuing Jobless Claims	US	Week Ended, Dec 08 - 2018	-	1661 thousand	1710 thousand
21	Inflation Rate (YoY)	Japan	Nov-18	-	1.4%	1.4%
21	Durable Goods Orders (MoM)	US	Nov-18	-	-4.4%	1.2%

December 19, 2018

**PT. MEGA CAPITAL SEKURITAS**  
**Head Office**  
**Menara Bank Mega Lt. 2**  
**Jl. Kapten P. Tendean Kav 12-14A**  
**Jakarta 12790**

**Dealing Room**

Phone No : +62 21 7995795

Fax No : +62 21 79175965

Eva Sarah Hutabarat	eva@megasekuritas.id	Head of Debt Capital Market
Cicah Sukaesih	cicah@megasekuritas.id	Debt Sales
Ajeng Palupi P.	palupi@megasekuritas.id	Debt Sales
Ratna Nurhasanah	ratna.nurhasanah@megasekutitas.id	Debt Sales
Qolbie Ardie	qolbie@megasekuritas.id	Economist & Fixed Income Analyst
Siti Maulina M.	siti.maulina@megasekuritas.id	Administrative Assistant

**DISCLAIMER**

This Document is for information only and for the use of the recipient. It is not to be reproduced or copied or made available to others. Under no circumstances is it to be considered as an offer to sell or solicitation to buy any security. Any recommendation contained in this report may not be suitable for all investors and strictly a personal view and should not be used as a sole judgment for investment. Moreover, although the information contained herein has been obtained from sources believed to be reliable, its accuracy, completeness and reliability cannot be guaranteed. All rights