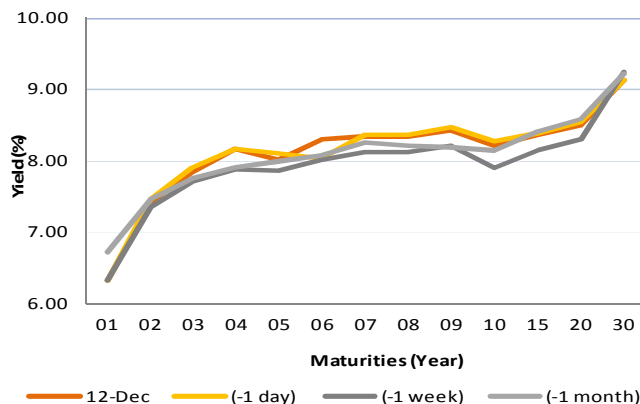


Fixed Income Daily Notes

Indonesia Government Bonds Yield

Maturities (Year)	12-Dec	(-1 day)	(-1 week)	(-1 month)
01	6.33	6.33	6.33	6.71
02	7.43	7.45	7.35	7.47
03	7.84	7.90	7.72	7.76
04	8.16	8.16	7.87	7.90
05	8.01	8.09	7.86	7.98
06	8.30	8.04	8.02	8.09
07	8.35	8.37	8.12	8.26
08	8.34	8.37	8.12	8.21
09	8.43	8.46	8.22	8.20
10	8.21	8.28	7.91	8.14
15	8.36	8.39	8.14	8.40
20	8.50	8.54	8.29	8.58
30	9.13	9.13	9.24	9.21

Source: Bloomberg



Global Market Update

- In November 2018, US inflation slowed down to 2.2% (YoY) and 0.0% (MoM). This is lowest inflation since last 9 months. Slower inflation was caused by lower oil price in November.
- Yesterday, December 12 2018, US 10-years treasury note yield rose to 2.91% after geopolitical tension began to fade because Italy-EU reconciliation and progress of US-China negotiation. Yield of benchmark global bond also moved upward, reflected by yield 10-years UK Gilt and German Bunds, which fell to 1.28% and 0.28%, respectively.
- Inflasi AS pada bulan November 2018 tercatat mengalami perlambatan dengan adanya penurunan menjadi 2,2% (YoY) dan 0,0% (MoM). Tingkat inflasi tahun ini merupakan yang terendah dalam 9 bulan terakhir. Penurunan inflasi yang sesuai dengan ekspektasi investor disebabkan oleh menurunnya harga minyak dunia pada bulan November
- Yield 10-years US Treasury note kemarin, 12 Desember 2018, ditutup kembali naik ke level 2,91% setelah berkurangnya tensi geopolitik global sehubungan dengan meredanya ketegangan politik di Italia serta progres negosiasi AS-Tiongkok. Yield obligasi benchmark global juga ditutup mengalami kenaikan, terlihat dari yield 10 tahun UK Gilt dan German Bunds yang ditutup naik ke level 1,28% dan 0,28%

Domestic Market Update

- Today, Government bond prices on the secondary market are likely to strengthen moderately as appreciation Rupiah tendency. Rupiah will be ranging from IDR 14,506 - 14,528 and yield of 10-years benchmark bond (FR0064) will be ranging from 8.05% - 8.21%.
- Hari ini, pergerakan harga SBN secara umum di pasar sekunder diprediksi cenderung menguat terbatas akibat proyeksi menguatnya Rupiah. Nilai tukar rupiah terhadap dolar AS diprediksi bergerak pada kisaran Rp 14.506 – Rp 14.528, sedangkan yield benchmark 10 tahun (FR0064) pada perdagangan hari ini diperkirakan bergerak di rentang 8,05% - 8,21%.

Most Active Government Bonds	Last Price	Last Yield	Volume (IDR bn)
FR0059	92.70	8.22	2020
FR0064	87.10	8.11	1810
FR0078	101.30	8.06	1127
FR0070	100.90	8.16	1095
FR0069	100.45	6.42	530
PBS016	98.40	7.60	370
FR0061	96.90	8.05	272
FR0056	100.75	8.24	254
FR0074	91.47	5.10	244
FR0077	100.75	7.95	235

Most Active Corporate Bonds	Last Price	Last Yield	Volume (IDR bn)	
IMFIO2BCN3	idA	93.00	10.57	180
BPFIO2CN1	idBBB	94.00	9.50	80
FIFA03BCN3	idAAA	98.24	6.30	50
SIEXCL02ECN1	AAA(idn)	103.38	9.76	46
ADMFO4ACN3	idAAA	99.55	6.34	45
FIFA03ACN3	idAAA	99.33	5.08	37
ISAT01BCN4	idAAA	99.85	7.28	35
ADHIO2CN1	idA-	101.00	8.11	34
TAFS02BCN1	AAA(idn)	100.28	7.77	28
BBRIO2CCN1	idAAA	99.55	7.25	25

Global Stock Markets	Last Price	Chg (bps)	% Chg	% YTD
Indonesia (JCI)	6116	38.99	0.64%	-3.78%
Malaysia (KLCI)	1663	10.64	0.64%	-7.43%
Thailand (SET)	1635	1.26	0.08%	-6.78%
Singapore (STI)	3100	40.71	1.33%	-8.9%
Hang Seng	26187	415.04	1.61%	-12.5%
Nikkei 225	21603	454.73	2.15%	-5.11%
Shanghai	2602	8.06	0.31%	-21.32%
Dow Jones (DJIA)	24527	157.03	0.64%	-0.78%
London (FTSE 100)	6880	73.25	1.08%	-10.50%
DAX	10929	148.92	1.38%	-15.4%

FX Rate	12-Dec		
	12-Dec	(-1 day)	(-1 week)
USD/IDR	14,528	14,572	14,439
GBP/USD	1.263	1.249	1.274
USD/JPY	113.3	113.4	113.2
USD/SGD	1.372	1.374	1.367
USD/THB	32.76	32.83	32.75
USD/MYR	4.192	4.185	4.154

Macroeconomic Data	Nov-18	Oct-18	Sep-18
Consumer Price Index (MoM)	0.27	0.28	-0.20
Consumer Price Index (YoY)	3.23	3.16	2.88
Core Inflation (YoY)	3.03	2.94	2.82
BI 7-Day RR Rate (%)	6.00	5.75	5.75
Foreign Reserve (US\$ Bn)	117.20	115.20	114.80

Indonesia Sovereign CDS	2-year	5-year	10-year
As of			
12-Dec	60.29	134.09	209.51
(-1 Day)	63.35	141.00	218.20
(-1 Week)	63.12	140.60	217.62
(-1 Month)	70.98	147.43	222.44
(-1 Year)	36.43	91.42	158.74

Global Bonds	12-Dec			
	12-Dec	(-1 day)	(-1 week)	(-1 month)
Fed Fund Rate & US T-Bonds Yield				
Fed Fund Rate	2.25	2.25	2.25	2.25
2-Year	2.77	2.77	2.80	2.87
5-Year	2.77	2.74	2.79	2.96
10-Year	2.91	2.88	2.91	3.13
30-Year	3.15	3.13	3.17	3.37
10-Year Government Bond Yield				
UK	1.28	1.19	1.31	1.51
Germany	0.28	0.23	0.28	0.40
France	0.73	0.71	0.68	0.78
China	3.28	3.28	3.30	3.42
Japan	0.05	0.04	0.06	0.11
Korea	2.73	2.73	2.73	2.73
Thailand	2.68	2.64	2.65	2.81
Malaysia	4.09	4.10	4.08	4.16
Singapore	2.30	2.26	2.25	2.46
Indonesia USD Bond Yield				
INDO-22	4.07	4.09	4.11	4.18
INDO-27	4.66	4.69	4.70	4.81
INDO-47	5.37	5.41	5.41	5.52

Money Market	12-Dec			
	12-Dec	(-1 day)	(-1 week)	(-1 month)
JIBOR				
O/N	5.90	5.92	5.92	5.75
1M	7.36	7.33	7.33	7.08
3M	7.67	7.67	7.67	7.53
LIBOR				
1M	2.43	2.43	2.38	2.31
3M	2.78	2.78	2.77	2.63
6M	2.88	2.88	2.89	2.86
Indonesia Interest Rates				
Deposit 1M	6.30	6.20	6.24	6.06
Lending	13.9	13.9	13.5	13.8

Benchmark	12-Dec	(-1 day)	Change	Yield
FR0061	97.04	96.99	5	8.00%
FR0059	92.50	92.32	18	8.25%
FR0074	91.99	91.65	34	8.50%
FR0072	97.03	96.80	23	8.58%

Government Bond Ownership As of December 11, 2018 (in Trillion)

Holders	2013	2014	2015	2016	2017	6-Dec-18	7-Dec-18	10-Dec-18	11-Dec-18
Banks	335.43	375.55	350.07	399.46	491.61	654.23	635.15	641.33	648.70
Bank Indonesia	44.44	41.63	148.91	134.25	141.83	78.43	97.51	92.73	85.90
Mutual Fund	42.50	45.79	61.60	85.66	104.00	116.26	116.27	116.58	116.69
Insurance	129.55	150.60	171.62	238.24	150.80	201.30	201.23	201.11	200.98
Foreign Investor	323.83	461.35	558.52	665.81	836.15	898.81	898.54	896.92	896.31
Pension Fund	39.47	43.30	49.83	87.28	198.06	212.51	212.51	212.53	212.60
Individual Investors	32.48	30.41	42.53	57.75	59.84	76.57	76.55	76.54	76.56
Others	47.56	61.32	78.76	104.84	117.48	136.35	136.69	136.70	136.71
Total	995.25	1,209.96	1,461.85	1,773.28	2,099.77	2,369.14	2,374.45	2,374.45	2,374.45

Source: Bloomberg, IDX & DJPPR

December 13, 2018

Government Bonds Prices

Closing Price Data : 12-Dec-2018



Series	Maturity	TTM	Coupon	Price	YTM	Price (-1)	Price Spread (bps)
FR0069	15-Apr-19	0.34	7.875%	100.49	6.29%	100.49	0.3
FR0036	15-Sep-19	0.76	11.500%	103.94	6.18%	103.94	0.0
FR0031	15-Nov-20	1.93	11.000%	106.58	7.26%	106.51	7.8
FR0034	15-Jun-21	2.51	12.800%	111.65	7.60%	111.50	15.3
FR0053	15-Jul-21	2.59	8.250%	101.18	7.74%	101.10	7.3
FR0061	15-May-22	3.42	7.000%	97.04	8.00%	96.99	5.0
FR0035	15-Jun-22	3.51	12.900%	114.53	8.06%	114.39	14.0
FR0043	15-Jul-22	3.59	10.250%	106.77	8.04%	106.65	11.5
FR0063	15-May-23	4.42	5.625%	91.09	8.06%	91.03	6.8
FR0046	15-Jul-23	4.59	9.500%	105.01	8.16%	106.02	-100.9
FR0039	15-Aug-23	4.68	11.750%	113.56	8.19%	113.43	13.1
FR0070	15-Mar-24	5.26	8.375%	100.79	8.18%	100.61	17.9
FR0077	15-May-24	5.43	8.125%	100.77	7.95%	100.43	33.3
FR0044	15-Sep-24	5.76	10.000%	107.86	8.25%	109.13	-127.3
FR0040	15-Sep-25	6.76	11.000%	113.76	8.29%	113.74	1.7
FR0037	15-Sep-26	7.76	12.000%	120.95	8.28%	120.64	31.4
FR0056	15-Sep-26	7.76	8.375%	100.55	8.27%	100.35	20.2
FR0059	15-May-27	8.43	7.000%	92.50	8.25%	92.32	18.0
FR0042	15-Jul-27	8.59	10.250%	111.60	8.33%	111.26	34.5
FR0047	15-Feb-28	9.18	10.000%	110.29	8.37%	110.16	12.8
FR0064	15-May-28	9.43	6.125%	86.82	8.16%	86.32	49.8
FR0071	15-Mar-29	10.26	9.000%	104.37	8.35%	104.05	31.3
FR0078	15-May-29	10.43	8.500%	101.25	8.07%	100.60	64.6
FR0052	15-Aug-30	11.68	10.500%	115.00	8.45%	114.85	14.6
FR0073	15-May-31	12.43	8.750%	102.26	8.45%	102.26	0.0
FR0054	15-Jul-31	12.60	9.500%	108.12	8.44%	107.71	41.3
FR0058	15-Jun-32	13.52	8.250%	97.69	8.54%	97.69	0.0
FR0074	15-Aug-32	13.68	7.500%	91.99	8.50%	91.65	34.1
FR0065	15-May-33	14.43	6.625%	86.02	8.31%	85.61	41.2
FR0068	15-Mar-34	15.27	8.375%	98.74	8.52%	100.00	-125.6
FR0072	15-May-36	17.44	8.250%	97.03	8.58%	96.80	22.7
FR0045	15-May-37	18.44	9.750%	112.29	8.42%	112.288	0.0
FR0075	15-May-38	19.44	7.500%	90.81	8.47%	90.54	26.8
FR0050	15-Jul-38	19.60	10.500%	117.82	8.60%	117.82	0.0
FR0057	15-May-41	22.44	9.500%	107.14	8.77%	109.01	-187.1
FR0062	15-Apr-42	23.36	6.375%	76.15	8.80%	76.13	1.3
FR0067	15-Jul-43	24.61	8.750%	100.92	8.66%	100.92	0.0
FR0076	15-May-48	29.44	7.375%	83.18	9.13%	83.17	1.6

Source: Bloomberg, IBPA & MCS Estimates

Macroeconomic Indicator Calendar (December 10 - December 14 2018)

INDONESIA

Date	Indicator	Series Data	Actual	Previous	Projection
10	Retail Sales (YoY)	Oct-18	2.9%	4.8%	3.9%

GLOBAL

Date	Indicator	Country	Series Data	Actual	Previous	Projection
10	Economic Growth (YoY)	Japan	3rd Quarter	-2.5%	2.8%	-1.9%
10	Balance of Trade	Germany	Oct-18	EUR 18.3 billion	EUR 18.3 billion	EUR 17.7 billion
11	ZEW Economic Sentiment Index	Germany	Dec-18	-17.5	-24.1	-22.0
12	Inflation Rate (YoY)	US	Nov-18	2.2%	2.5%	2.4%
12	Crude Oil Inventory	US	Week Ended, Dec 07 - 2018	-1.21 million barrel	-7.32 million barrel	1.90 million barrel
13	ECB Interest Rate	Euro Area	-	-	0.0%	0.0%
13	Inflation Rate Final (YoY)	Germany	Nov-18	-	2.5%	2.3%
13	Initial Jobless Claims	US	Week Ended, Dec 08 - 2018	-	231 thousand	226 thousand
13	Continuing Jobless Claims	US	Week Ended, Dec 01 - 2018	-	1631 thousand	1707 thousand
14	Markit Manufacturing PMI Flash	Germany	Dec-18	-	51.8	51.5
14	Markit Manufacturing PMI Flash	US	Dec-18	-	55.3	55.4
14	Retail Sales (MoM)	US	Nov-18	-	0.8%	0.4%

December 13, 2018

PT. MEGA CAPITAL SEKURITAS
Head Office
Menara Bank Mega Lt. 2
Jl. Kapten P. Tendean Kav 12-14A
Jakarta 12790

Dealing Room

Phone No : +62 21 7995795

Fax No : +62 21 79175965

Eva Sarah Hutabarat	eva@megasekuritas.id	Head of Debt Capital Market
Cicah Sukaesih	cicah@megasekuritas.id	Debt Sales
Ajeng Palupi P.	palupi@megasekuritas.id	Debt Sales
Ratna Nurhasanah	ratna.nurhasanah@megasekutitas.id	Debt Sales
Qolbie Ardie	qolbie@megasekuritas.id	Economist & Fixed Income Analyst
Siti Maulina M.	siti.maulina@megasekuritas.id	Administrative Assistant

DISCLAIMER

This Document is for information only and for the use of the recipient. It is not to be reproduced or copied or made available to others. Under no circumstances is it to be considered as an offer to sell or solicitation to buy any security. Any recommendation contained in this report may not be suitable for all investors and strictly a personal view and should not be used as a sole judgment for investment. Moreover, although the information contained herein has been obtained from sources believed to be reliable, its accuracy, completeness and reliability cannot be guaranteed. All rights reserved by PT Mega Capital Sekuritas.